



ARSEA CONSULTING ENGINEERS SDN BHD



**ACHIEVMENTS MEASURED
OUR SUCCESS**



CONTACT INFORMATION

ARSEA CONSULTING ENGINEERS SDN BHD

MELAWATI MALL

ADDRESS:

NO.40 1ST-3RD FLOOR, JALAN WANGSA SETIA 3,
WANGSA MELAWATI, 53300, SETAPAK, KUALA LUMPUR

TEL: 03-41434923

FAX: 03-41434922

WEBMAIL:

consultant@arseagroup.com

WORKING HOURS:

MON-FRI, 8.30am – 5.30pm

GMAIL:

arseagroup@gmail.com

Google Earth

Image © 2020 Maxar Technologies

400 m



THE FIRM

ARSEA CONSULTING ENGINEERS SDN. BHD. (ARSEA)

acronymed from

ADVANCE RESOURCES and SOLUTIONS in ENGINEERING APPLICATION;

is established as an engineering and project management consultant striving towards providing total commitment in offering excellent, quality and prompt professional services to our.

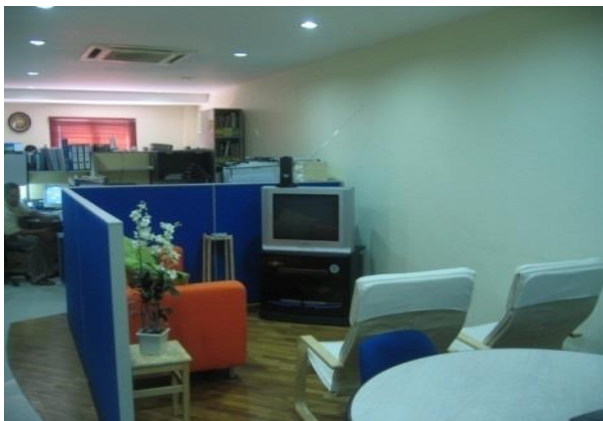
The firm incorporated in 1995, is also an ISO 9001:2015 certified consultancy.

The FOUNDING MEMBERS have each more than 30 years design experience in maritime civil and structural engineering.





OFFICE ENVIRONMENT





Journey of Technical Excellence Through

Advanced **R**esources And **S**ervices In **E**ngineering **A**pplications.

Twenty-five years and still counting, our directors have journeyed and evolved from meticulous engineering training and practices as individuals in Jabatan Kerja Raya Malaysia in early 1980's through to mid 1990's, culminating in the formation of **Arsea Consulting Engineers Sdn Bhd.** in 1995.

Our directors and senior associates / professionals has combined experience of more than 100 years of experience, knowledge and expertise able to deliver multi-disciplinary range of engineering and technical services. Supported by able and committed professionals, we deliver best quality, innovative and economical designed solutions to our esteemed clients, locally and globally.



BOARD OF DIRECTORS





PRINCIPAL CONSULTANT

IR. HJ. JAFBUS B. ABDUL JALIL

was born on the 21st April 1960, in Pahang.

He graduated with a degree in Civil Engineering with Honours (July 1983) from University of Leeds, United Kingdom and later completed his M.Sc. (Maritime Civil Eng.) from the University of Liverpool (September 1992). He has also attended the Port and Harbour Engineering Course conducted by the Port And Harbour Bureau, Ministry of Transport Japan in 1987. A Professional Engineer (P.E No.: 8104) and also Member of Institution of Engineers Malaysia (No.:15267).

Port Section Design & Research Department, Public Works Department, Malaysia from August, 1983 till December, 1994. Resident Engineer for the completion of the first Ferry Terminal in Langkawi just in time for CHOGM (Commonwealth Head of Government Meeting) in 1988. He won the excellent service award from the Public Works Department and Ministry of Works for the year 1987. With these achievements he received the British Council Scholarship to pursue his post graduate study in Maritime Civil Engineering at the University of Liverpool, United Kingdom; October 1991 till Sept 1992.

- Prepare the Langkawi Maritime Development Master Plan which was presented and endorsed by the then Prime Minister Malaysia, Tun Mahathir Mohamad.
- Upgrading of the Fishing Port Complex in Peninsula Malaysia e.g. Chendering, Endau, Kuala Perlis, Kuantan etc.
- Upgrading Passenger ferry Terminals e.g. Pangkor, Lumut, Langkawi
- Structural appraisal and design for rehabilitation of Jetties and Port infrastructure e.g. Operational Jetty,
- Degaussing range/jetty, ammunition jetty Naval Base Lumut, jetties owned by Marine Department Malaysia, underwater Pile appraisal for Penang Port
- December 1994, he resigned from Public Works Malaysia to incorporate ARSEA CONSULTING ENGINEERS SDN BHD. (ARSEA, www.arsegroup.com). The firm is established as an engineering and project management consultant with specialization in Maritime Civil Engineering consultancy works and is an ISO 9001:2008 certified.



University of Liverpool



University of Leeds

PUBLICATIONS

- "The Development of Fishing Ports in Malaysia" - Sedimentation and Solutions. Infrastructure Maritime Development (Siltation and Countermeasures) Seminar. 27 - 28 Nov. 1995 - Langkawi
- "The Use of Rubber Fenders in Malaysian Ports" - Seminar on rubber for engineering application in the transport industry (non-tyre sectors). 17 - 18 July 1995 - Kuala Lumpur
- "Langkawi Maritime Development Master Plan" - Langkawi Development Authority/Malaysia Government.
- "Deterioration of Reinforced Concrete Maritime Structures - Causes, Cure and Prevention"





DATO IR. HJ. ROSLI B. DAUD

was born on the 4th March 1956, in Johor.

Graduated with an Honours Degree in B.Sc. (Civil Engineering) from University College of Wales. Engineering Course in Japan conducted by the Port And Harbour Bureau, Ministry of Transport Japan in 1987 with Certificate In Port & Harbour Engineering. Registered Professional Engineer (P.E No.: 7994) and also Member of Institution of Engineers Malaysia (No.:14970).

Public **Works Department, Malaysia (1981-1986) and then seconded as DIRECTOR**, Technical Division, Fisheries Development Authority of Malaysia, Kuala Lumpur (1986-1991). In 1991 he was transferred to the Port Unit, JKR Headquarters till 1997.

Members of team that prepared the Langkawi Maritime Development Master Plan which was presented and endorsed by the then Prime Minister Malaysia. Preparation and implementation of Maritime Infrastructure/Facilities Maintenance System for infrastructures/facilities owned by government departments/agencies

Other major contributions in maritime infrastructure works in Malaysia include:

- Planning and upgrading of the Fishing Port Complex in Peninsula Malaysia e.g. Chendering, Endau, Kuala Perlis, Kuantan .
- Planning and detailed design of Penang Port, Kuantan Port, Marine Police Bases, Passenger ferry Terminals e.g. Pangkor, Lumut , Langkawi,
- Structural appraisal and design for rehabilitation of Jetties and Port infrastructure e.g. Operational Jetty, Degaussing range/jetty, ammunition jetty Naval Base Lumut, jetties owned by Marine Department Malaysia, underwater Pile appraisal for Deep Water Wharves, Penang Port

PUBLICATIONS

- Langkawi Maritime Development Masterplan
- Deterioration of Maritime Concrete Structures Causes, Prevention & Cure
- The development of Fishing Ports in Malaysia Sedimentation and Solutions - for Seminar on Maritime Infrastructure Development (JKR/JICA).

LECTURES

- Preparing lecture notes on maritime structure and presenting to the engineers at Public Works Department Training Institute (IKRAM).





CHIEF EXECUTIVE OFFICER



IR. HJ. MOHD HALIMI B. DATO ABDUL HAMID

was born on the 21st April 1959, in Pahang.

Graduated with a degree in Civil Engineering with Hohours (July 1983) from University of Salford, United Kingdom and M.Sc. from the Royal Melbourne University. Registered Professional Engineer (P.E No.: 7825) and also Member of Institution of Engineers Malaysia.

Served as **Executive Engineer** with the **Public Works Department, Malaysia** from 1982 till January,1995.

Resident Engineer for the construction of the Cendering, Terengganu Fishing Port Second breakwater. Winner of the excellent service award from the Public Works Department and Ministry of Works for the year 1988. Registered Professional Engineer (P.E No.: 7825) and also Member of Institution of Engineers Malaysia.

Members of the team that installed the first wave recorder offshore and prepared the Maritime Management Policy in maintaining the maritime Infrastructure/Facilities Maintenance System for infrastructures/facilities owned by government departments/agencies. PADI registered scuba diver.

Other major contributions in maritime infrastructure works in Malaysia include:

- Planning and upgrading of the Fishing Port Complex in Peninsula Malaysia e.g. Chendering, Endau, Kuala Perlis, Kuantan etc.
- Planning and detailed design of Penang Port, Kuantan Port, Marine Police Bases, Passenger ferry Terminals e.g. Pangkor, Lumut , Langkawi, etc.
- Overall planning and design works undertaken by the company. Slipway Lembaga Kemajuan Ikan Malaysia, Kuantan
- Structural appraisal and design for rehabilitation of Navigational Aids (Light beacons and buoys) owned by Marine Department Malaysia, underwater Pile appraisal for Deep Water Wharves, Penang Port. Etc.
- Design audit and project management for RMN Submarine Base, Sapanggar Bay, Sabah.. Maritime Assets appraisal for Penang port.

PUBLICATIONS

- "The Development of Fishing Ports in Malaysia" - Sedimentation and Solutions. Infrastructure Maritime Development (Siltation and Countermeasures) Seminar.





IR. HJ. ABDUL RANI B. ABDUL AZIZ

was born on the 6th January 1972, in Perak.

Graduated with a diploma in Civil Engineering (April 1984), and a degree in Civil Engineering with Honours (August 1995) from University Teknologi Malaysia. Registered Professional Engineer (P.E No.: 12222) and also Member of Institution of Engineers Malaysia.

Served as **Technical Assistant** with the **Public Works Department, Malaysia** from January 1985 till September, 1990.

Assistant to the Engineer for the implementation of the port and jetty project. Experience which includes planning, designing, estimating and taking off of projects done departmentally, preparation of tender documents, land survey works and site supervision. Also experience in doing hydrographic survey works which include calculations and plotting of seabed contours.

Successfully completed 6 months Japanese Language Intensive Course conducted by ITM and JICA from September 1990 until May 1991.

Attended the Port and Harbour Engineering Course at Port and Harbour Research Institute in Japan conducted by the Port and Harbour Bureau, Ministry of Transport Japan. The course is conducted mainly through classroom teaching, discussion and visits to major ports and project sites.

Other major contributions in maritime infrastructure works in Malaysia include:

- Planning and upgrading of the Fishing Port Complex in Peninsula Malaysia e.g. Chendering, Endau, Kuala Perlis, Kuantan etc.
- Planning and detailed design of Penang Port, Kuantan Port, Marine Police Bases, Passenger ferry Terminals eg. Pangkor, Lumut , Langkawi, etc.
- Overall planning and design works undertaken by the company. Slipway Lembaga Kemajuan Ikan Malaysia, Kuantan
- Structural appraisal and design for rehabilitation of Navigational Aids (Light beacons and buoys) owned by Marine Department Malaysia, underwater Pile appraisal for Deep Water Wharves, Penang Port. Etc.
- Design audit and project management for RMN Submarine Base, Sapanggar Bay, Sabah.. Maritime Assets appraisal for Penang port.





CORPORATE INFORMATON



COMPANY MISSION

Aspiration for Quality

Reliable Solutions

Service Par Excellence

Efficient Management

Attentive Governance

The integration of our sufficient and diligent resources contributes to an effective management which results in a well controlled project monitoring and cost control. The essence of project management is the timely handing over of the project with uncompromising attention for quality demanded by the client and our attentive governance.



COMPANY POLICY

ARSEA being a consultant principally for engineering consultancy services shall :

- ✓ *Strive to attain a premier status in the civil and structural engineering consultancy works globally.*
- ✓ *Be committed to continuous improvement and to ensure customer satisfaction.*
- ✓ *Ensure Quality and Reliability for more cost effective techniques on engineering consultancy*





ISO CERTIFICATE

RECOGNITION



RECOGNITION



Board of Engineers Malaysia



2012
Celebrating Malaysia's
Enterprising Spirit



PETRONAS



Petrofac  RNZ

RECOGNITION



RECOGNITION



**ACHIEVEMENT OF 1 MILLION SAFE MANHOURS
CELEBRATION AND APPRECIATION**

OUR EXPERIENCE

THE SERVICES

- **Engineering & Technical Planning**
- **Civil and Structural Engineering**
- **Port and Maritime Civil Engineering**
- **Road & Highway**
- **Infrastructure & Services**
- **Structural Appraisal & Repair**
- **Project Management & Value Engineering**

The Founding members have pioneered many maritime and structural works from the planning stage through the construction and commissioning of the projects with expertise, experience and innovative solution. Throughout their services, formerly in JKR and now as Directors of ARSEA, collectively they have contributed to the planning, engineering designs and construction management of many prestigious maritime, developments and infrastructure projects.

Over the years, ARSEA has build up a team of reliable professionals, efficient associate consultants and experts specializing in civil and structural engineering works encompassing all disciplines and scopes of engineering / technical services.



DEPARTMENTAL OBJECTIVES

MANAGEMENT RESPONSIBILITY

To create and provide conducive working environment and through continuous training & development and maintaining good employer-employee relationship to remain competitive towards sustainable performance of the organization through no customer complaints on staff incompetency in any customer survey conducted.





ARSEA RESOURCES



SOFTWARES STRUCTURAL ANALYSIS

STAAD.Pro V8i	Comprehensive structural analysis program for static, dynamic, or pushover analysis of bridges, containment structures, embedded structures (tunnels and culverts), pipe racks, steel, concrete, aluminium or timber buildings, transmission towers, stadiums, and other structures.
ProtaStructure	multi-material modelling with steel, concrete and composite members, 3-D finite element analysis and code-compliant design of building structures with advanced time-history, staged construction and non-linear analyses, seismic isolators, non-linear link elements, seismic assessment and retrofitting.
ORION REINFORCED CONCRETE ANALYSIS AND DESIGN	Engineering software for reinforce concrete analysis and design.
TEDDS - CALCULATION PADS	Software for producing document, containing a mixture of calculations, sketched and text. TEDDS contains 1000's of standard Sketches, Calculations, Data Lists, Data tables and utility tools that can be pieced together to form a standard design.
AUTOCAD BUILDING DESIGN SUITE 2013 -REVIT -MEP -Structural Detailing	<p>Revit: - Specifically built for Building Information Modeling (BIM), empowering design and construction professionals to bring ideas from concept to construction with a coordinated and consistent model-based approach. Autodesk Revit is a single application that includes features for architectural design, MEP and structural engineering, and construction.</p> <p>MEP:- helps you draft, design, and document building systems. Create more accurate designs within a familiar AutoCAD-based environment. Increase productivity and reduce errors with automated drafting tasks, manufacturers' parts, and interference detection. Support mechanical, electrical, and plumbing (MEP) engineering systems throughout the building lifecycle with reliable DWG™ files.</p> <p>Structural Detailing:- helps structural engineers, detailers and fabricators create more precise detailing and fabrication shop drawings. Built on the familiar Autodesk® AutoCAD® software platform, it's structural engineering software for steel and concrete structures.</p>
Esteem 5.2	The Ultimate Reinforced Concrete Integrated Total Solution Software for automatic modeling, analysis, design and detailing. It supports beam intersections , auto pattern loading for beam moment/shear/torsion envelop design ,auto moment release for simply supported (beam end/drop/width difference, slab drop) ,slab opening, line load, patch load, point load ,Flexible floor by floor (non-uniform in elevation) shear wall modeling ,Strut and tie design for transfer wall ,Couple Beam-Column/Wall FEM compatibility for greater results accuracy ,3D RC Wall contour/ 2D floor plan contour view.

SOFTWARES INFRASTRUCTURE

MES Infra Applications

MiTS

MES Infra Total Solution.

One model with automatic synchronized updates between Earthworks, Storm Drainage System, Sewerage System, Water Reticulation System & Road Design.

MES-ROAD

Is a road & highway Analysis and Design software. It uses the latest computing technologies to provide a computational environment that is both user friendly, simple, fast and efficient.

EW3D

Is a 3D Earthworks Analysis and Design software. It uses the latest computing technologies to provide a computational environment that is both user friendly, simple, fast and efficient.

PondCAD

Is a IDF, On Site Detention(OSD), Detention Pond, Sediment Basin and Main Drain Analysis, Design and Detailing software. It uses the latest computing technologies to provide a computational environment that is both user friendly, simple, fast and efficient.

SewNet

Is a Sewerage Analysis, Design and Detailing software. It uses the latest computing technologies to provide a computational environment that is both user friendly, simple, fast and efficient.

DraNet

Is a Drainage Analysis, Design and Detailing software. It uses the latest computing technologies to provide a computational environment that is both user friendly, simple, fast and efficient.

LoopWinPlus

Is a Water Reticulation Analysis and Design Software. It uses the latest computing technologies to provide a computational environment that is both user friendly, simple, fast and efficient.

SOFTWARES

GEOTECHNICAL & ROAD

GEOSOFT	Capable of carrying most of the geotechnical analysis e.g. determination of soil moisture content, specific gravity of soil particles, unit weight, plastic limit and liquid limit test etc.
SLOPE W	Software that uses the limit equilibrium theory to solve for the factor of safety of earth and rock slopes. The comprehensive formulation of slope/w makes it possible to select a variety of methods for computing the factory of safety and to analyse both simple and complex geometric, stratigraphic and loading conditions.

COMPUTER ADDED DESIGN (CAD)

AUTOCAD 13/14/ 2000/2012 Full Version	A powerful software for creating drawing in 2D or 3D with advanced CAD features for hatching, rendering, direct distance entry animation and tracking augment a comprehensive set of drawing. Creation of visual model made easy high accuracy.
AUTOCAD LT Ver. 2.0/Ver. 2012	Software for fall featured 2D drafting, an extension 2D drawing tool with technology to create, revise and export varies form of drawing.
CADIAN 2008/2011	Software for fall featured 2D drafting, an extension 2D drawing tool with technology to create, revise and export varies form of drawing.
FastCAT ver. 9.0	Intelligent C.A.D software which helps you to turbo-charge the outcome of your existing design software. It turbo-charge your work productivity and accuracy. With full automated and artificial intelligent engine, Fast CAT creates senses to your dxf output.
Adobe Photoshop CS5	Adobe Photoshop is a graphics editing program developed and published by Adobe Systems Incorporated.
CorelDRAW 9.0	CorelDRAW is a vector graphics editor developed.

SOFTWARES

ADMINISTRATIVE

MICROSOFT OFFICE 97/ 2000/2007/2010 Standard Version	Microsoft Office is a proprietary commercial office suite of inter-related desktop applications, servers and services for the Microsoft Windows and Mac OS X operating systems, introduced by Microsoft in August 1, 1989. Initially a marketing term for a bundled set of applications, the first version of Office contained Microsoft Word, Microsoft Excel, and Microsoft PowerPoint.
MICROSOFT VISIO 2007	Designed for individuals who are looking for a powerful diagramming platform with a rich set of built-in stencils. It helps users to simplify complex information through simple, easy-to-understand diagrams. Visio Standard includes stencils for business, basic network diagrams, organization charts, basic flowcharts, and general multi-purpose diagrams.
WORDPERFECT 6.1	Word processing software for windows that allow users from small, time saving touches to revolution ways of processing documents.

PROJECT MANAGEMENT

Analytical hierarchy Process	The analytic hierarchy process (AHP) is a structured technique for organizing and analyzing complex decisions. Based on mathematics and psychology. It has particular application in group decision making. the AHP helps decision makers find one that best suits their goal and their understanding of the problem. It provides a comprehensive and rational framework for structuring a decision problem, for representing and quantifying its elements, for relating those elements to overall goals, and for evaluating alternative solutions. Once the hierarchy is built, the decision makers systematically evaluate its various elements by comparing them to one another two at a time, with respect to their impact on an element above them in the hierarchy.
MICROSOFT PROJECT 2007	Software to manage projects more effectively. It enables to organize and filter data, schedule tasks and resources and produce accurate reports all according to changing information needs.



ARSEA SCOPE OF SERVICES



PORT & MARITIME CIVIL ENGINEERING

- ❑ Feasibility and Master Plan Studies
- ❑ Hydrodynamic and Morphological Analysis
- ❑ Onshore/Offshore site investigation and Geotechnical Analysis
- ❑ Detailed Engineering Design and Draughting
- ❑ Tendering and Management
- ❑ Construction and Project Management



PORT & MARITIME CIVIL ENGINEERING



1) NAVIGATION AID, MALAYSIA



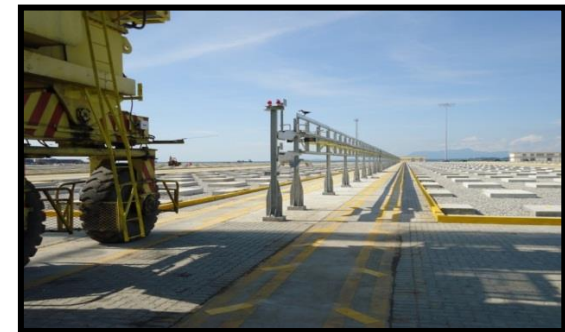
2) ENDAU FISHING PORT, MALAYSIA



3) PENANG SWETTENHAM CRUISE, MALAYSIA



4) WHARF REPAIR, PENANG PORT, MALAYSIA



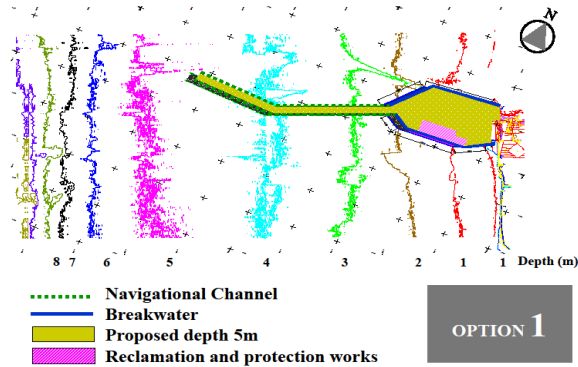
5) CONTAINER YARD, (ELECTRIFIED RTG),
PENANG, MALAYSIA

PORT MANAGEMENT, ENGINEERING AUDITING & STUDY

KUANTAN PORT EXPANSION BASIN DREDGING



PERLIS PORT STUDY



SAPANGGAR SUBMARINE BASE



CIVIL & STRUCTURE ENGINEERING

- Feasibility and master plan studies
- Site Investigation and geo technical analysis
- Detailed engineering design and draughting
- Tendering and management
- Construction and project management



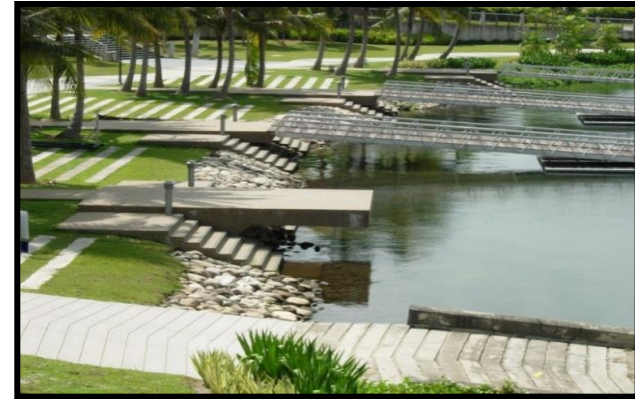
CIVIL & STRUCTURE ENGINEERING



1) WILAYAH PERSEKUTUAN
PUTRAJAYA, MALAYSIA



2) LAHAD DATU, SABAH, MALAYSIA



3) WILAYAH PERSEKUTUAN
PUTRAJAYA, MALAYSIA



4) UITM JASIN, MELAKA, MALAYSIA



5) IUCAM PEKAN, PAHANG, MALAYSIA



STRUCTURAL APPRAISAL AND REPAIR

- ❑ Preliminary and detail structural survey
- ❑ Structural defects diagnosis and prognosis
- ❑ Structural appraisal and material analysis
- ❑ Tendering and management
- ❑ Maintenance proposal and structural audit/management





THE PROJECTS



ACE/1999-03

EXPANSION TO THE MOORING BASIN OF KUANTAN PORT, KUANTAN, MALAYSIA

CLIENT: KEMENTERIAN PENGANGKUTAN (MINISTRY OF TRANSPORT)
PROJECT VALUE: RM153 MIL

Design audit, project management and supervisory works for the dredging of the inner basin extension of Kuantan Port, Kuantan, Malaysia.

Work scope and challenges includes:

- Inland dredging for mooring basin expansion to cater for future berthing quay structure.
- Navigation/turning basin of anticipated bigger vessels.
- Planning of construction management catering for the tight working condition and barging activities with its close proximity to the existing liquid bulk jetty
- Safety considerations for the daily port operation
- Additional infrastructure include a new hazardous liquid berth.



Kuantan Port Layout

THE LATEST OF THE BULKHEAD CONDITION OF PORT Kuantan MALAYSIA



ACE/2002-04

DEVELOPMENT FOR SERI MALAYSIA HOTEL ON LOT PT 12332, MALACCA MALAYSIA

CLIENT : KEMENTERIAN PELANCONGAN (MINISTRY OF TOURISM)
PROJECT VALUE : RM 13MIL



- Hotel with 100 guest rooms, administration block swimming pool
- Watch tower, lobby restaurant and staff café
- Slope protection with rock filled gabion and R.C retaining wall
- Road, water supply, MASMA drainage and 140 PE sewerage system

ACE/2002-05

DEVELOPMENT FOR MARINE POLICE BASE AT LAHAD DATU, SABAH

CLIENT: KEMENTERIAN HAL EHWAL DALAM NEGERI (MINISTRY OF INTERNAL AFFAIRS)
PROJECT VALUE: RM81 MIL

Planning, detailed design, project management & value engineering.
Development components comprises of:

- 15 acres sea-reclamation works (1.5 design wave height).
- 800m rock revetment and 648m pile foundation retaining wall.
- Piled foundation T shaped jetty for 4 berth catering PCB, PA and 2 nos PX boats
- Piled foundation single storey up to 4 stories R.C multi purpose building i.e quarters, administrative, sport complex and workshop.
- Road and hardstanding, water reticulation, 66,500 gallon per day R.C elevated mushroom distribution water tank.
- Sewerage reticulation, 950 PE sewerage treatment plant.
- MASMA Drainage System including Gross Pollutant Trap (GPT).

Challenges:

- Economize the land used plan by limiting the reclamation to 1m ACD.
- Geotechnical condition with initial hard strata at 3m and reaching rock bed at 12m below sea bed level.
- Slipway was designed with fingers to cater for boat lift operation.





ACE/2003-06

DEVELOPMENT OF REGATTA COURSE AND PROMENADE, PRECINT 6 PUTRAJAYA (WATERSPORT COMPLEX PROJECT AT PRECINT 6, PUTRAJAYA)

CLIENT: PUTRAJAYA CORPORATION
PROJECT VALUE: RM70 MIL

Planning, detailed design, project management and value engineering for Development of Regatta Course and Promenade. Precint 6 Putrajaya.

9.5 acres Waterfront Development Project. The project consists of:

- Grand Stand with tensile membrane and steel structure roofing.
- Finish Tower structural steel building.
- Swimming pool complex with 1 level of basement.
- Regatta course lanes, pontoons and boat launching ramp.
- Revetment, R.C. Wall, softscape and hardscape.
- Pre-bore spun piled foundation.
- Road, water supply, MASMA drainage with STD and 2,600 PE sewerage system.
- Water retaining structure cum basement car park.





ACE/2003-10

REDEVELOPMENT OF SWETTENHAM PIER, PENANG

CLIENT: PENANG PORT SDN BHD

PROJECT VALUE: RM65 MIL

Planning, detailed design, project management & value engineering for Redevelopment of Swettenham Pier, Penang.

Component of project includes:

- Demolition of existing jetty.
- Construction Of New Main T-Pier Jetty, Trestle, dolphin & walkaway bridge to cater berthing of 4 nos. of Cruise vessels max. size 113,000 GRT and 2 pontoons for 4 berth of 250T coastal ferries.
- Custom, immigration, Quarantine Terminal building with passenger boarding bridge.
- 400m open type berthing wharf structure and dolphins on 16m compressible soil strata (SPT less than 3) at max. water depth of 19m for 110,000 GRT vessel.
- Biggest vessel guided and tug assisted berth was for cruise vessel Queen Mary 2 (length 345m and 150,000 GRT).
- Terminal and CIQ building constructed on the open typed piled platform, designed as a continuous framed structure with the laterally loaded wharf.





ACE/2004-01

DETAILED ENGINEERING DESIGN AND SUPERVISION OF CONSTRUCTION FOR EXPANSION OF NORTH BUTTERWORTH CONTAINER TERMINAL, PENANG

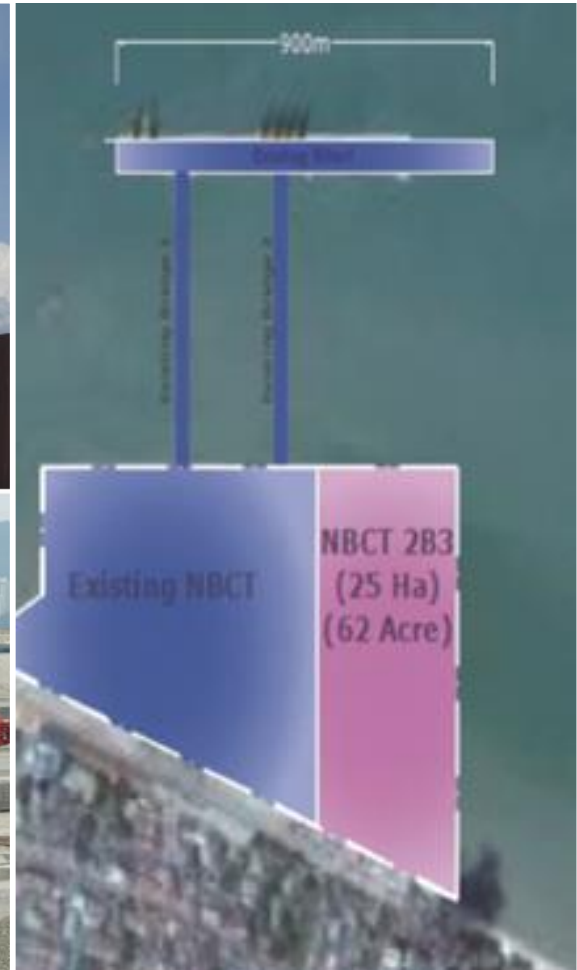
CLIENT: PENANG PORT SDN BHD
PROJECT VALUE: RM220 MIL

Planning, detailed design, project management and value engineering for expansion of North Butterworth Container Terminal.

The project components are:

- 21 hectares vertical drained reclamation on 16m deep compressible soil strata (SPT less than 4).
- Relocation Of Existing Building & Infrastructure.
- Container Yard for 5406 TGS and 120 refer points.
- New administration building & facilities.
- Sand replacement and revetment key structure.
- Reclamation area designed for 5+1 container stacking yard.
- Vertical drain and surcharge to expedite engineered settlement and consolidation.
- Piled supporting girders for Electrified gantry cranes to cater for any differential settlement.





ACE/2006-02

THE DESIGN, CONSTRUCTION, COMPLETION, TESTING AND COMMISSIONING OF SUBMARINE BASE FOR ROYAL MALAYSIA AT SAPANGAR BAY, KOTA KINABALU, SABAH.

CLIENT: JABATAN KERJA RAYA MALAYSIA - CAWANGAN PANGKALAN UDARA DAN MARITIM
(DEPARTMENT OF WORKS MALAYSIA)
PROJECT VALUE: RM350 MIL

Design audit, value engineering and project management of submarine base for Royal Navy Malaysia at Sepangar bay, Kota Kinabalu, Sabah.

- Approximately 80 acres development partly via reclamation.
- Retaining structures and submarine berth/shiplight.
- Administrative buildings operation buildings.
- Workshops/hangers and depots.
- Accommodation and related infrastructures.
- Overall project planning to comply with Naval requirement and submarine operation and supporting services.
- Auditing the pontoon breakwater (120m by 20m) against any possible leakages with anticipation for future scheduled maintenance works.
- Special berthing design with camel fender system to cater for sensitivities of the submarine sonar fin.





ACE/2007-09

PROPOSED MOSQUE COMPLEX AT BANDAR PUNCAK ALAM, SELANGOR DARUL EHSAN.

CLIENT : PUNCAK ALAM HOUSING SDN.BHD.
PROJECT VALUE : RM16,480,130.00



- Mosque Complex – 5000 PERSONS
- Development Area - 9.9 acres
- Cut & Fill Quantities - 18 000 m³
- Surface water drainage - Designed for 5 years ARI and checked for 10 years ARI
- Average water demand - 68,000 gallon per day
- Capacity of Suction Tank - One third of the daily demand (22,667 gallon per day)
- Pipe Coefficient - Mild Steel (M.S.) pipe, 110,Ductile Iron (D.I.) pipe, 110 and HDPE pipe,100

MINIMUM COVER TO MAIN REINFORCEMENT

- Foundation shall be 50mm
- Ground beams/stump shall be 40mm
- Column shall be 30mm
- Beams, wall, slab shall be 25mm



ACE/2007-11

HIGH TECH TRAINING CENTER PROJECT (ADTEC) KEMAMAN, TERENGGANU

CLIENT: KEMENTERIAN SUMBER MANUSIA (MINISTRY OF HUMAN RESOURCES)
PROJECT VALUE: RM120 MIL



FUNCTIONAL REQUIREMENT

Development Type: Educational Institution

Development area: 61.24 acres

4 main zones:

- Administration Zone
- Academic Zone
- Residential Zone
- Recreational Zone (Grand Stand & Sport Facilities)

INFRASTRUCTURE

- R4 Road
- 2,610 PE for STP
- 42,200 gallons water tank
- Block drains (450mm, 600mm, 750mm, 900mm)
- Subsoil drain for football field





ACE/2009-04

KUANTAN MEDICAL CENTRE INDRA MAHKOTA KUANTAN, PAHANG

CLIENT: KUANTAN MEDICAL CENTRE SDN BHD
PROJECT VALUE: RM90 MIL

5 storey private hospital for 150 beds including lecture theaters, halls, operating theaters on Lot 54559/Pn 723, Jln Tun Abd Razak, Kuantan, Pahang.



ACE/2010-08

DEVELOPMENT OF INTERNATIONAL UNIVERSITY COLLEGE OF AUTOMOTIVE (IUCAM) STUDENT VILLAGE ON PT 13225, PEKAN, PAHANG

CLIENT: DRB-HICOM PROPERTIES SDN BHD
PROJECT VALUE: RM120 MIL

Development and construction of International College of Automotive Malaysia College (ICAM) Student Village for 2,400 student.

Infrastructures :

- Earthwork (150,000 m3)
- Drainage (12,000m3 dry pond)
- Sewerage (6,100 PE)
- Road
- Water Reticulation (235,000 gallon water demand)

Ancillary Building

- One (1) sewerage treatment plant
- Two (2) chambers Sub-station
- One (1) main suction water tank

Structures Main Component:

- Five (5) blocks of 12 storey student hostel
- Two (2) blocks of 12 storey staff apartment
- One (1) block 4 storey visiting lectures apartment
- One (1) multi purpose hall
- Cafeteria cum commercial centre





ACE/2012-02

DEVELOPMENT OF HERITAGE CENTRE & MARITIME CENTRE AT PUTRAJAYA ADMINISTRATIVE CENTRE, PRESINT 5, PUTRAJAYA, MALAYSIA

CLIENT: PERBADANAN PUTRAJAYA
PROJECT VALUE: RM120 MIL

Planning, detailed design, project management & value engineering for 12.5 acres development of Heritage Park and Maritime Centre.

The project consist of:

- Hotels, business complex, Malay Water Village & Viewing Tower.
- Waterfront Structure, Artificial Beach, Borneo Pavilion Emergency Rescue Centre, R.C. Ramp and Ferry Terminal, launching pontoon etc.
- Pre-bore spun piled foundation (both underwater and land), R.C. lake edge wall, sub-soil drainage system, R.C. building and ERC structural steel building.





ACE/2012-07

CONSTRUCTION OF NEW BULKHEAD, WHARF, SHORELINE PROTECTION, SKID TRACK AND RELIEVE PLATFORM.

CLIENT: TH HEAVY ENGINEERING BERHAD
PROJECT VALUE: RM45 MIL

Planning, Detailed Design and Construction Management for the New Bulkhead, Wharf, Shoreline Protection, Skid Track and Relieve Platform.

The scope of works include:

- Shoreline Protection 300m
- Wharf extension and new load-out bulkhead 8,000 MT
- Skidtrack 250m & 150m
- Skid beam 250m
- Construction of new fabrication table
- Planning for dredging task
- Design of retaining structure (approx: 18 meter deep on soft soil conditions)
- To cater for dredging to -7.0M ACD .
- Simulation for loading of 8,000 MT load-out.



ACE/2012-11

UITM CAMPUS SEMUJUK JASIN, MELAKA

CLIENT: YBK USAHASAMA SDN BHD

PROJECT VALUE: RM300 MIL

University Campus (UiTM) with total development area 195 acres and built up infrastructure area 84 acres that includes an admin building, lecturer halls, hostels and other centralized facilities for 5,000 students.

- Civil & structural engineering consultancy include conventional and industrialized building (IBS) system design.
- Water demand of 250,000 gallons / day
- Sewerage Treatment Plant (STP) for 5,000 P.E
- Road works.
- MASMA Drawing System including 1.5 hectares on site detention pond (OSD)



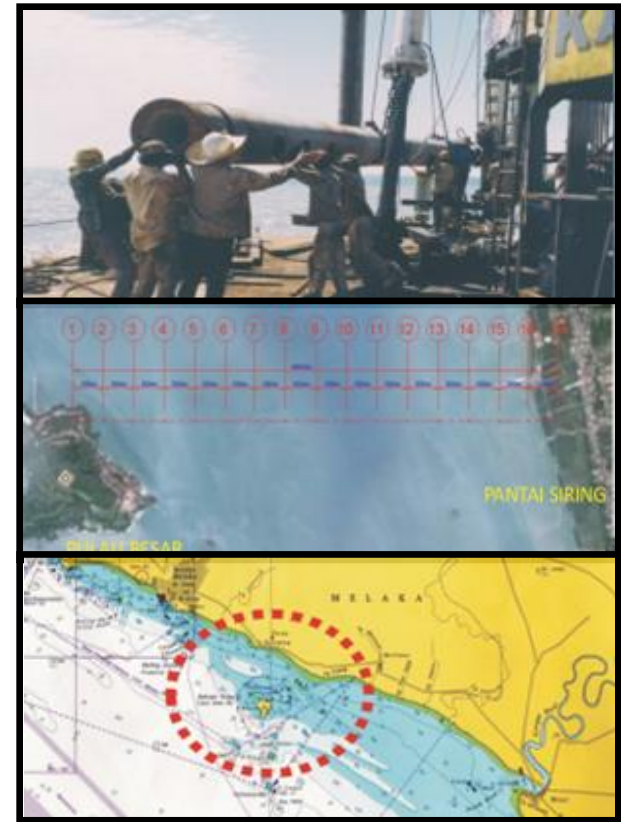
ACE/2013-06

132V TRANSMISSION LINE FROM SSU PANTAI SIRING TO SSU PULAU BESAR, MELAKA

CLIENT: TENAGA NASIONAL BERHAD (NATIONAL ELECTRICITY BOARD)
PROJECT VALUE: RM33 MIL

132kV double circuit overhead line to be energized at 11kV from SSU Pantai Siring to SSU Pulau Bandar Besar Melaka with an estimated route length of 4.2 km crossing the Malacca Straits. Scope of works includes design and construction of 12 nos of monopole tower foundations and 2 nos of substation gantry foundations based on 132kV overhead line loading including wave load, wind load, hydrostatic pressure, current and ship impact load complete with necessary facilities/accessories.

- **Maintenance Platform**, handrail and climbing facilities with security gate.
- **Fender** system for berthing.
- **Navigation** aids and protective coating approved by relevant authority.



ACE/2013-08

THE DETAILED DESIGN OF FLOOD MITIGATION PROJECT FOR SUNGAI GEMAS, NEGERI SEMBILAN

CLIENT : JABATAN PENGAIRAN DAN SALIRAN, NEGERI SEMBILAN
PROJECT VALUE : RM 25,553,701.10

Mukim Gemas in part of Segamat and Tampin District are concentrated in Gemas Town and surrounding area (the Town divided into two districts by Gemas River).

1. The river is approximately 35 km length
2. Catchment area covering 243.5 km² involving both states of Negeri Sembilan and Johor
3. Flow through housing area and industrial area
4. Sg. Gemas flows through Gemas Town from the south toward the northeast and joins the Sg. Muar in 8 km distance from the town.





ACE/2013-15

PROPOSED KOTA SERIEMAS CLUB HOUSE

CLIENT : SERIEMAS DEVELOPMENT SDN BHD
PROJECT VALUE : RM14,385,115.15



- 1. STRUCTURE**
 - Building
 - Foundation / piling
- 2. INFRASTRUCTURE**
 - Earthwork
 - Roadwork
 - Drainage (OSD, etc)
 - Sewerage (STP, septic tank, etc)
 - Water Supply (Elevated Water Tank, Suction Tank, pump house)





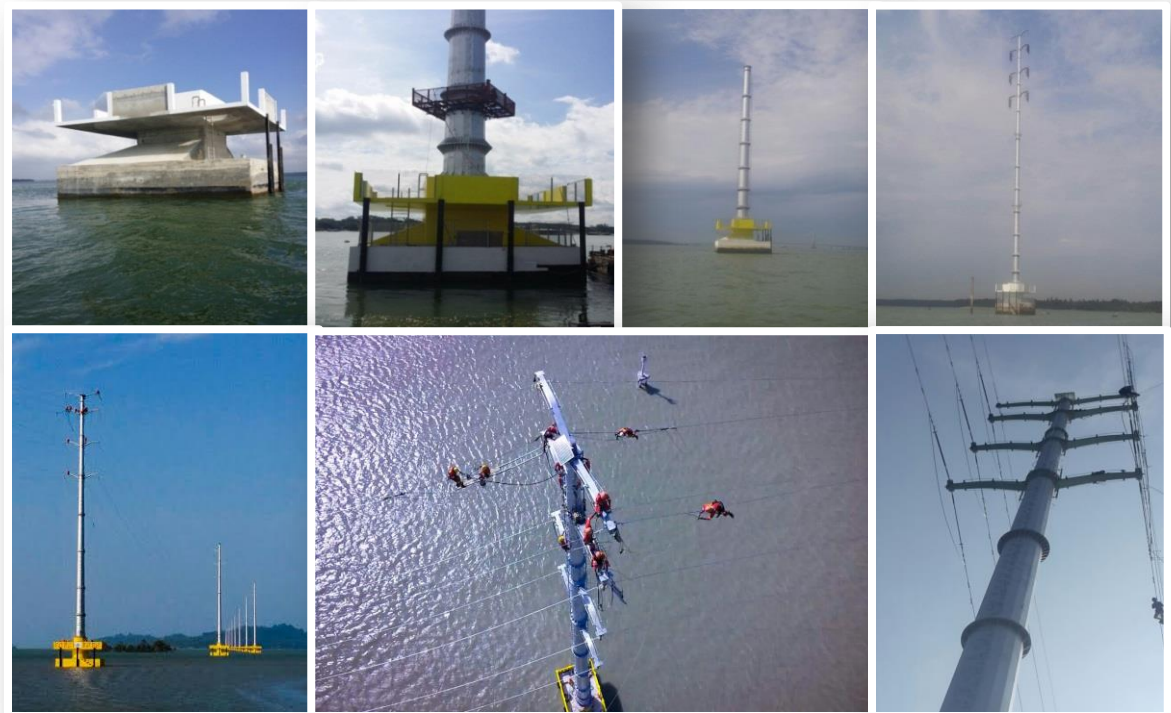
ACE/2014-11

275KV Double Circuit Transmission Line From Point B To Point C (Sg. Johor River Crossing)

CLIENT : TENAGA NATIONAL BERHAD (TNB))
PROJECT VALUE : RM 23,000,000.00

ERECTION AND ASSEMBLY TOWER SECTION

1. Each tower consists of 11 segments in each monopole
2. Erection work is divided into 2 phases, known as phase 1 and phase 2.
3. Phase 1 erect from segment 1 to 8 and using piling frame.
4. Phase 2 erect from segment 9 to 11, using 200 tonnes with extended crane boom.





ACE/2015-04

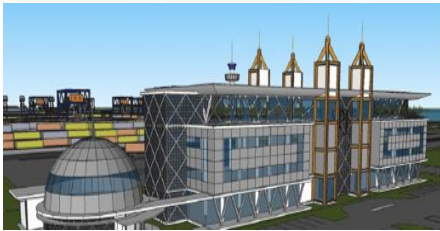
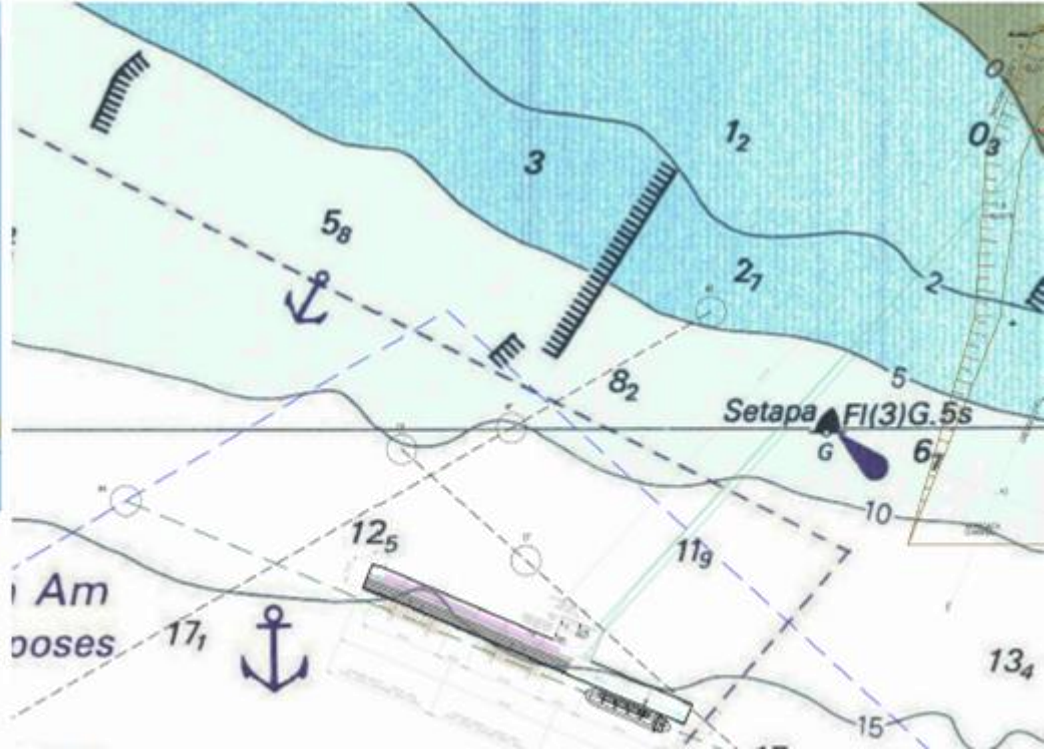
FRONT END ENGINEERING DESIGN (FEED) FOR PETRONAS SOLID PRODUCT JETTY IN PENGERANG, JOHOR BAHRU

CLIENT: PETRONAS REFINERY AND PETROCHEMICAL CORPORATION
PROJECT VALUE: RM1.2 BIL

To develop the masterplan, conceptual design and prepare FEED for:

- Dredging works for vessel approaching channel, turning and mooring in the port area
- The mooring and turning basin requirement
- Berthing jetty for container carrier (1,000 - 1,200 TEUs) and bulk carrier of 7,000 - 15,000 DWT vessels.
- Container yard for 200,000 TEUs
- Sulphur stockpile building
- Sulphur handling System
- Fire Fighting System.
- Building Onshore Facilities Include Local Control Building, Port Administrative Building.
- MTRA Qualitative and quantitative for navigational study of the overall marine facilities.
- 2-D ship Capability and Availability analysis including evaluation of downtime
- 3D Ship maneuvering model of the port (Full Mission Ship Simulation)
- FEED for EPCC ITB





ACE/2015-05

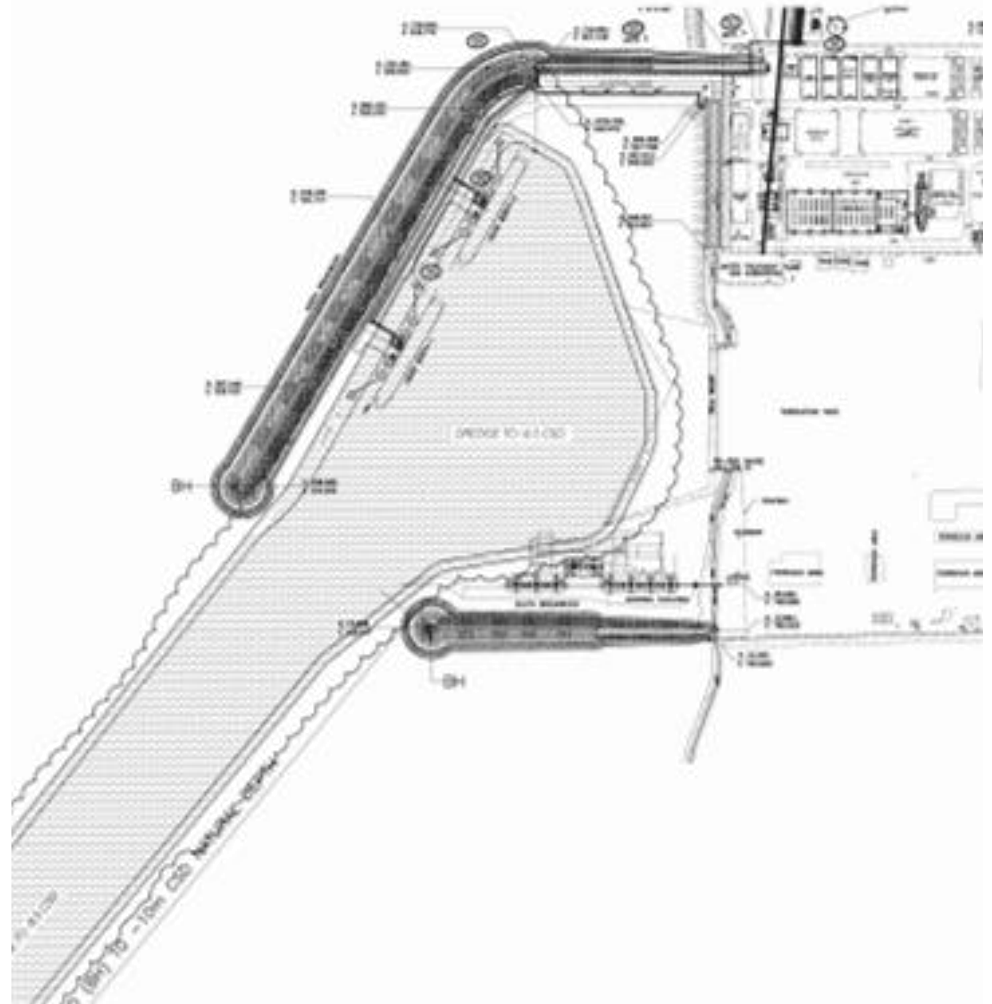
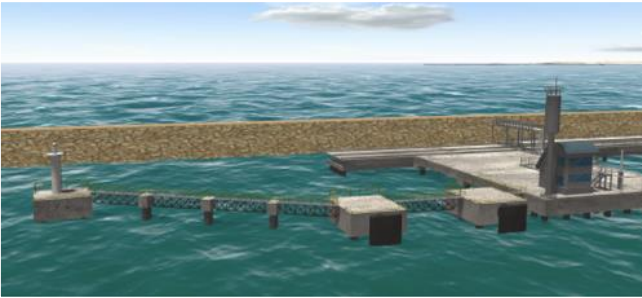
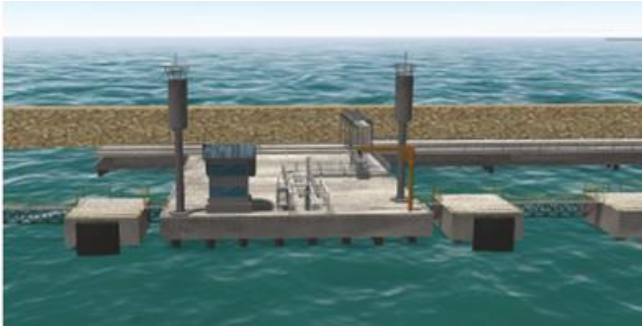
PROPOSED BASIC ENGINEERING DESIGN AND FRONT END ENGINEERING DESIGN (FEED) FOR JETTY AND RELATED CIVIL WORKS AT NEW PC (T) SB'S KIYANLY SUPPLY BASE (KSB), TURKMENISTAN

CLIENT: PETRONAS CARIGALI (TURKMENISTAN) SDN BHD
PROJECT VALUE: USD250 MIL

To develop the masterplan, conceptual design and prepare FEED for:

- Dredging works for vessel approaching channel, turning and mooring in the port area
- The mooring and turning basin requirement
- Liquid berth jetty (s) for berthing of 7,000 - 15,000 DWT vessels.
- Fire Fighting System for the Liquid Berth Jetty(s)
- Building Onshore Facilities Include Local Control Building, Substations, and E&I Main Cable routing
- MTRA Qualitative and quantitative for navigational study of the overall marine facilities.
- 2-D ship Capability and Availability analysis including evaluation of downtime
- 3D Ship manoeuvring model of the port
- FEED for EPCC ITB





UPGRADING AND MODERNIZATION OF FISHERY PORT AND FACILITIES

CLIENT: LEMBAGA KEMAJUAN IKAN MALAYSIA (MALAYSIAN FISHERY DEVELOPMENT BOARD)
PROJECT VALUE: RM200 MIL

The development components include:

1. Berthing facilities for near shore and offshore fishing boats.
2. Mooring Area
3. Fish Sorting Area
4. Marketing Area
5. Packaging & Packing Area
6. Cold room & Storage Area
7. Net mending area
8. Fishery products related industry
9. Administrative office
10. Shop lots
11. Staff quarters





ACE/2016-01

DEVELOPMENT FOR MARINE POLICE BASE AT TANJUNG KUPANG, JOHOR

PACKAGE 1 - RECLAMATION, BASIN EXCAVATION, MARITIME WORKS, MAIN ROAD INFRA

PACKAGE 2 - TRIMMING OF EXCESS EARTH, BUILDING AND INFRASTRUCTURE WORKS

PACKAGE 3 - TRIMMING OF EXCESS EARTH, BUILDING AND INFRASTRUCTURE WORKS

CLIENT: PLBT SDN BHD

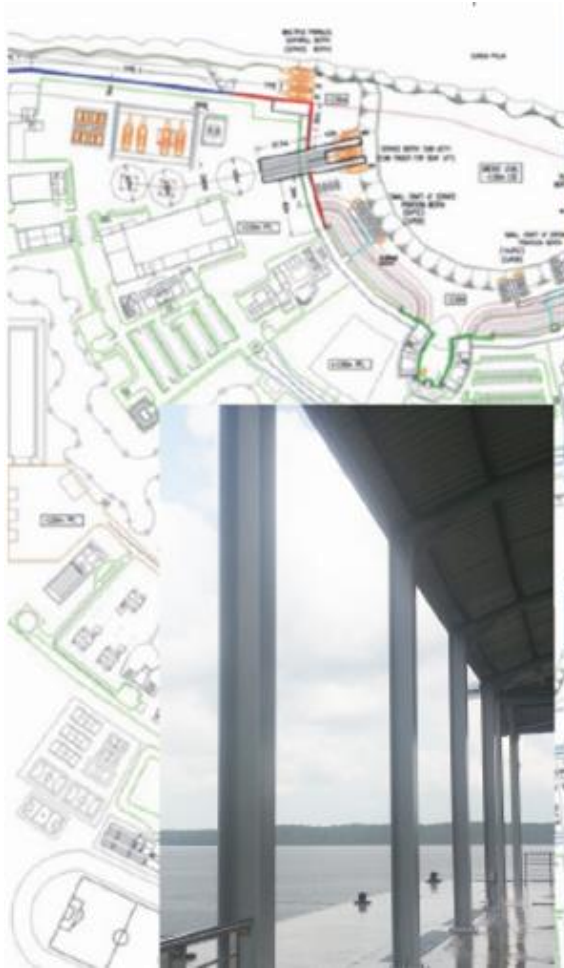
PROJECT VALUE: RM450 MIL

Planning Detailed Design and Project Management for Marine Police Base at Tanjung Kupang Johor.

The project comprises of:

- 110 acres development project with training complex and staff quarters
- Maritime berthing structures and its basin and related infrastructure works.
- 1.5 mil m3 of land reclamation works, construction of jetties, slipway, boat lift platform, procurement of pontoons.
- Staff quarters: high-rise (18-storey), medium-rise and low-rise building.
- Administration building, swimming pool complex and multipurpose hall.
- Boat hanger, storage, workshops and water tank tower.
- Pre-bore spun piled foundation, road, water supply, MASMA drainage with Sewerage Treatment Plant and 5,000 PE sewerage system.
- Typical Malaysia west coast geological characteristic with 16m compressible soil strata (spt less than 4).
- Reclamation management plan was incorporated the ongoing reclamation projects in the region to allow windows for suitable dredger availability.
- Special environment management plan due to site proximity to international maritime boundary and RAMSAR declaration on mangrove reserve.
- Installation on double layered silt curtain to mitigate river pollution during reclamation and dredging.
- Planning and management of phased development with include vertical drain and surcharge to expedite engineered settlement and consolidation





P_ARIZ/2010-01

DEVELOPMENT FOR CUSTOM, IMMIGRATION & QUARANTINE COMPLEX AND PASSENGER JETTY AT MALACCA RIVER MOUTH

CLIENT: KEMENTERIAN HAL EHWAL DALAM NEGERI MALAYSIA (MINISTRY OF INTERNAL AFFAIRS)
PROJECT VALUE: RM60 MIL

- Integrated CIQ Complex.
- River bank profiling protection.
- Berthing and landing wharfs for operation vessels and passenger ferries.
- 60m length x 9m width passengers wharf.
- 58m length x 6m width operation wharf.



STRUCTURE APPRAISAL AND REHABILITATION

Client : Royal Malaysian Navy, Penang Port Sdn. Bhd. Department of Irrigation and Drainage
Malaysia (Jabatan Pengairan dan Saliran Malaysia)

Project Value : RM 100

Structural appraisal and rehabilitation works are mainly for the jetty and wharf that has been deteriorated due to corrosion of concrete reinforcement and / or steel structures.

The services includes structural inspection, appraise, design of rehabilitation works and project management.

The structural repair to the "Piles at Berth 1 To 5 and Access Bridge No. 2 To 6 of Butterworth Deep Water Wharves" involved reinstatement to 3,000 piles of the wharves by cutting and recasting of the piles and beams.

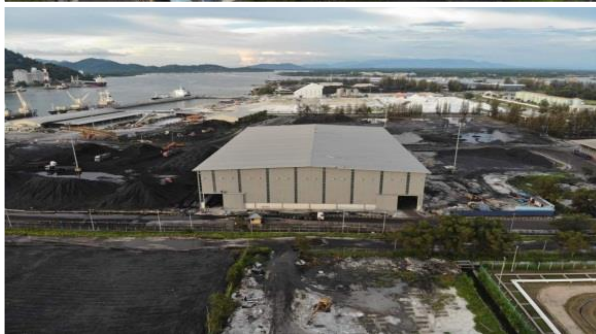


CONSTRUCTION OF WAREHOUSE NO 4 AT LUMUT MARITIME TERMINAL SDN BHD, LOT 1, LUMUT PORT INDUSTRIAL PARK, JALAN KG. ACHEH, 32000 SITIAWAN, PERAK DARUL RIDZUAN.

CLIENT : LUMUT MARITIME TERMINAL SDN BHD
PROJECT VALUE : RM11,000,000.00

ITEM.	COMPONENT	DESCRIPTION
1.	Foundation Works	Using Pile System
2.	Building Steel Trusses Frame 80m x 120m	Based on designs of certain types of trusses
3.	Reinforcement Concrete (R.C) Flooring Works	Based on the loadings of bulk cargo for the warehouse
4.	External Retaining Wall & Movable Wall	3 meter height wall for both types
5.	Metal Clad Roof and Wall	For the whole perimeter area of Warehouse No. 4
6.	Mechanical & Electrical Works	Involving lighting system and fire fighting system





ACE/2016-09

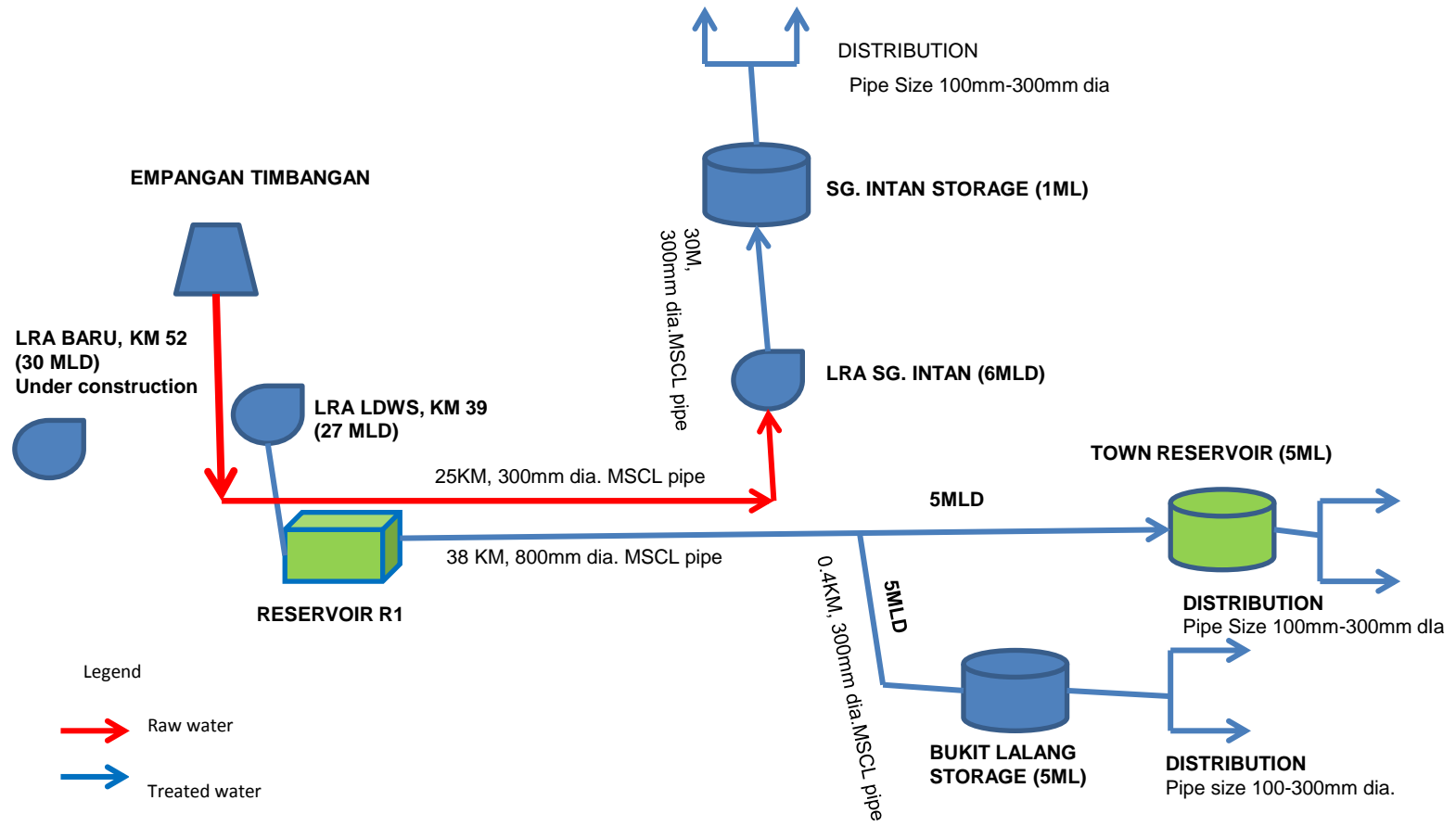
PROJEK BEKALAN AIR LUAR BANDAR (BALB) KAWASAN SEMPORNA, SABAH

CLIENT : KEMENTERIAN PEMBANGUNAN LUAR BANDAR
PROJECT VALUE : RM180,000,000.00

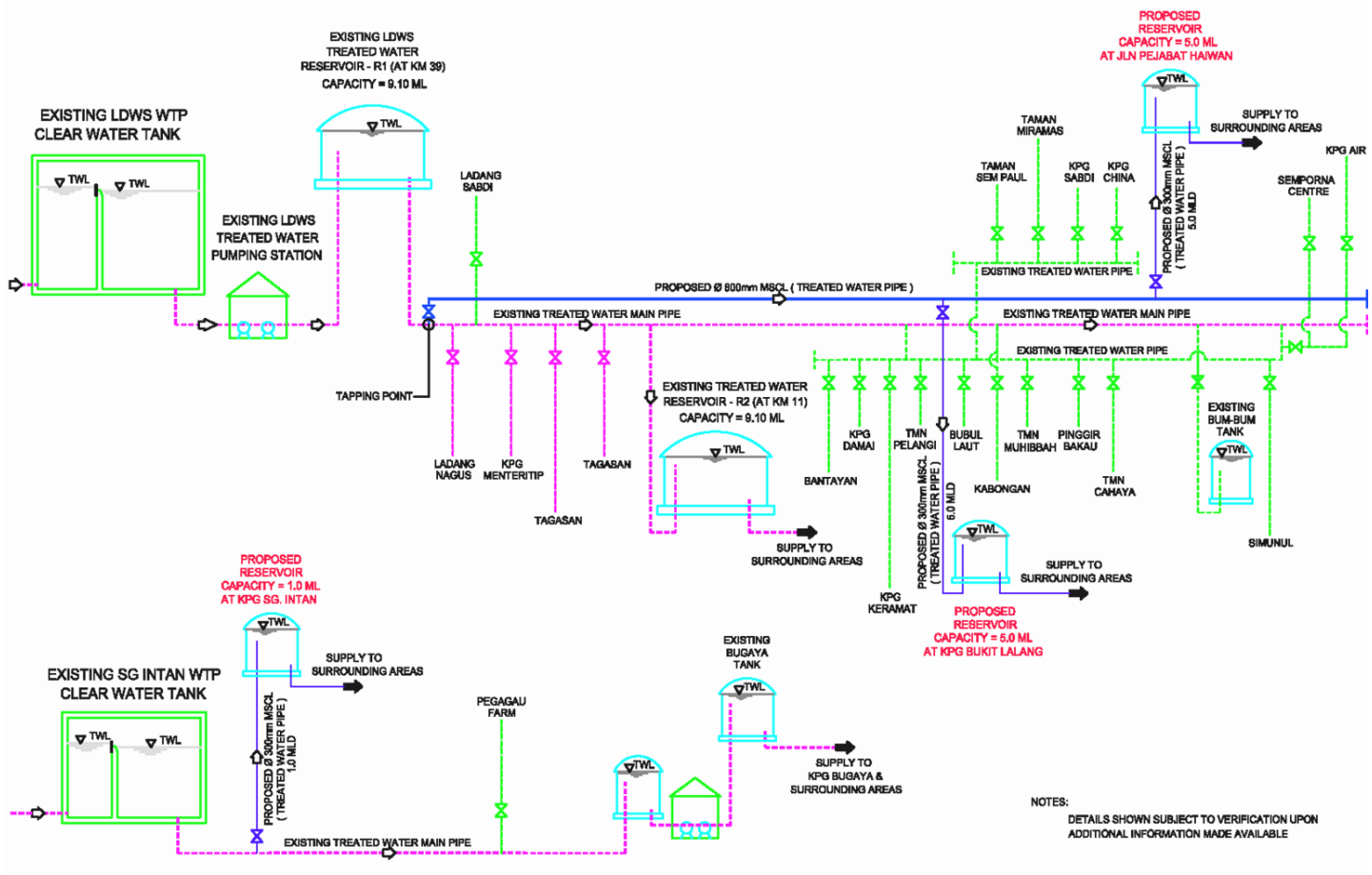
1. Treated water through complete water supply system (Estimated 7,500 houses).
 2. Main transmission pipeline to channel water from the Water Storage Tank KM38 R1 in Jalan Tawau-Semporna and pipelines to areas that have not had access to treated water supply in the Semporna District.
-
1. Resolve the problem of raw water source for Water Treatment Plants at Sg. Intan and the supply of treated water to Bugaya Area, Tanjung Kapor, Kg. Sg. Intan, Jalan TLDM, Jalan Kemiri, Jalan Bubul Lama and Jalan Pesisir.



PRELIMINARY WATER RETICULATION SYSTEM SCHEMATIC



TREATED WATER SUPPLY SCHEMATIC DIAGRAM



NOTES:
 DETAILS SHOWN SUBJECT TO VERIFICATION UPON
 ADDITIONAL INFORMATION MADE AVAILABLE



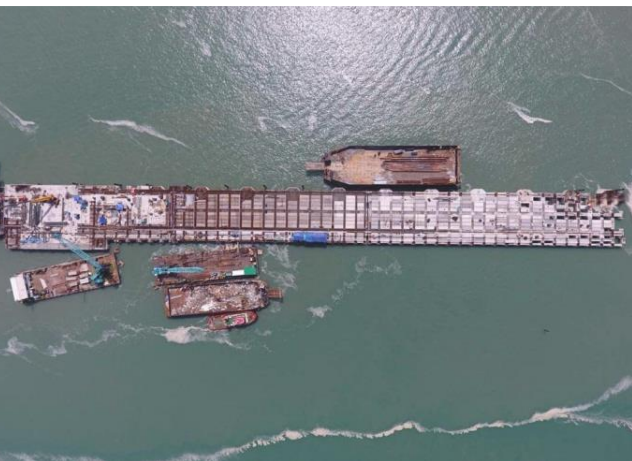
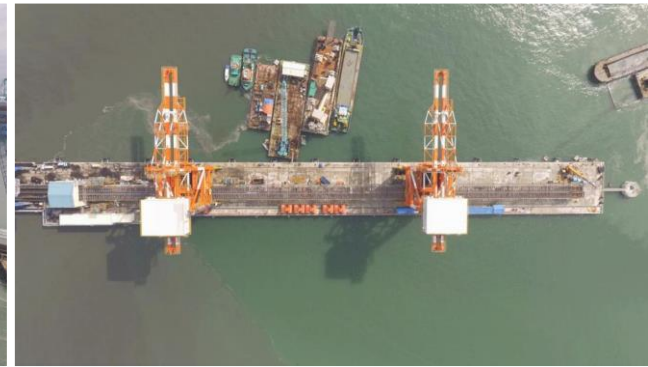
ACE/2017-01

**CONSULTANCY SERVICE AS OWNER ENGINEER FOR THE
ENGINEERING, PROCUREMENT, CONSTRUCTION AND
COMMISSIONING (EPCC) OF NEW COAL UNLOADING JETTY AND
ASSOCIATED BULK MATERIAL HANDLING SYSTEM AT 1X 1000MW
COAL FIRED POWER PLANT AT TANJUNG BIN, JOHOR**

CLIENT : MALAKOFF CORPORATION BERHAD
PROJECT VALUE : RM180,000,000.00

Independent Checker for Civil & Structure and Mechanical & Electrical works for the construction of jetty and mooring dolphin structure, connecting walkway, ancillary works such as fenders, bollards, quick release hooks, rails, storm anchor, buffer stops, jack up plates, buildings for substation and rest area, services and utilities, drainages and dredging works.



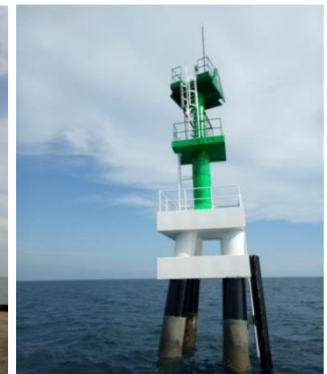


ACE/2017-07

PROPOSED AIDS TO NAVIGATION TO APPROACH CHANNEL COMPRISING OF PILING WORKS, RC STRUCTURE WORKS, LIGHT BEACONS, ELECTRICAL WORKS, LIGHTBUOYS AND ALL ACCESSORIES FOR NEW DEEP WATER TERMINAL (NDWT) AT KUANTAN PORT, PAHANG

CLIENT : KUANTAN PORT CONSORTIUM
PROJECT VALUE : RM14,000,000.00

1. 8 nos of Light Beacon structures with average of 2 weeks per structure.
2. Each structure consist of average 4 nos of 700mm to 1000 mm diameter spun pile and of length 45m to 60m.
3. The deepest structure is at – 20 m ACD and 7 nautical mile (12 km) from shore.
4. 2 nos of 20 ton hydraulic hammer pile driving working barge. (barge size)



ACE/2017-12

CADANGAN PEMBANGUNAN KAWASAN PERLANCONGAN DI ATAS LOT PTD 2344, TELUK BUIH, MUKIM TENLU, DAERAH MERSING, JOHOR DARUL TAKZIM UNTUK TETUAN MAJLIS WILAYAH EKONOMI PANTAI TIMUR

CLIENT : EAST COAST ECONOMIC REGION (ECERDC)
PROJECT VALUE : RM8,489,889.00

1. 2 unit chalet sesebuah.
2. 8 unit chalet berkembar.
3. 1 unit pejabat pengurusan.
4. 1 unit dewan serbaguna.
5. 2 gerai makan serta kemudahan berkaitan







Certified ISO 9001:2015

Certificate No. MY194188



ACE/2018-01

PROPOSED CONSTRUCTION AND COMPLETION OF LUMUT MARITIME TERMINAL EXPANSION PROJECT AT MUKIM LUMUT, MANJUNG, PERAK FOR MESSRS. LUMUT MARITIME TERMINAL SDN. BHD.

CLIENT : LUMUT MARITIME TERMINAL SDN BHD
PROJECT VALUE : RM 230,000,000.00

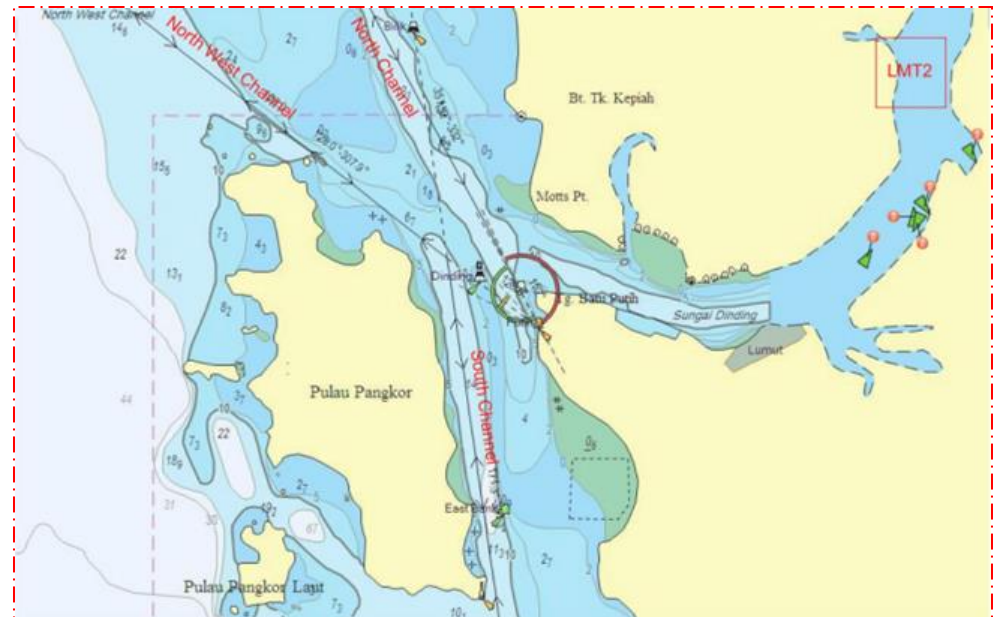
LUMUT PORT

PHASE 1 – SAND FILLING WORKS ON 115 ACRES (1,700,000 cu.m)

1. Slope protection – Stone revetment (150m)
2. Dredging over proposed water and to introduce methodology to reduce siltation rate.

PHASE 2

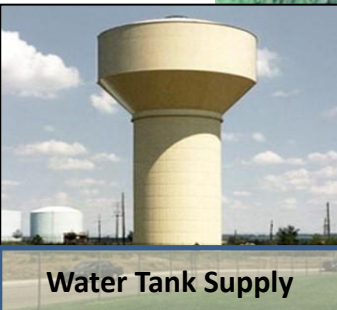
1. Design of 350m wharf & trestle to facilitate up to Panamax size vessel. Land side of the wharf and trestle should be designed for berthing smaller size of vessel & barges.



LUMUT PORT PROPOSED GENERAL LMT 2 DEVELOPMENT PLAN



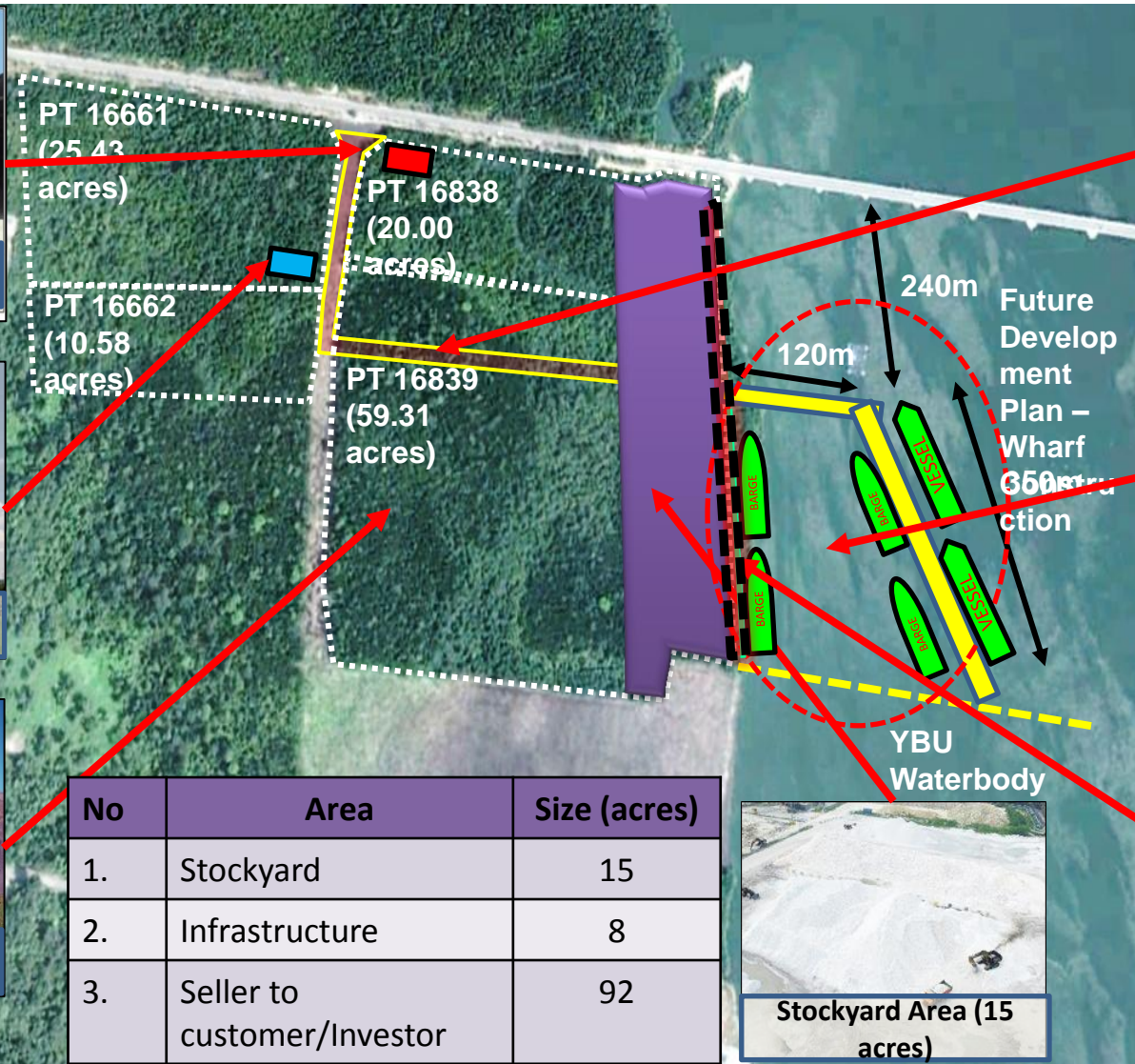
Power Supply



Water Tank Supply



Land Reclamation



Access Road



Dredging Area



Vertical Revetment

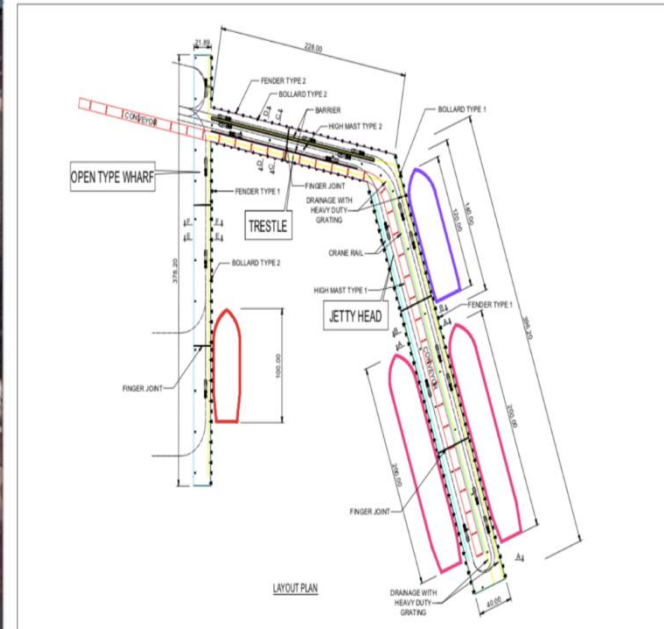
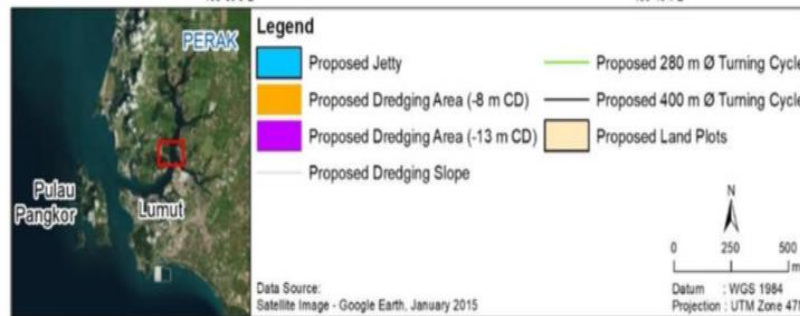
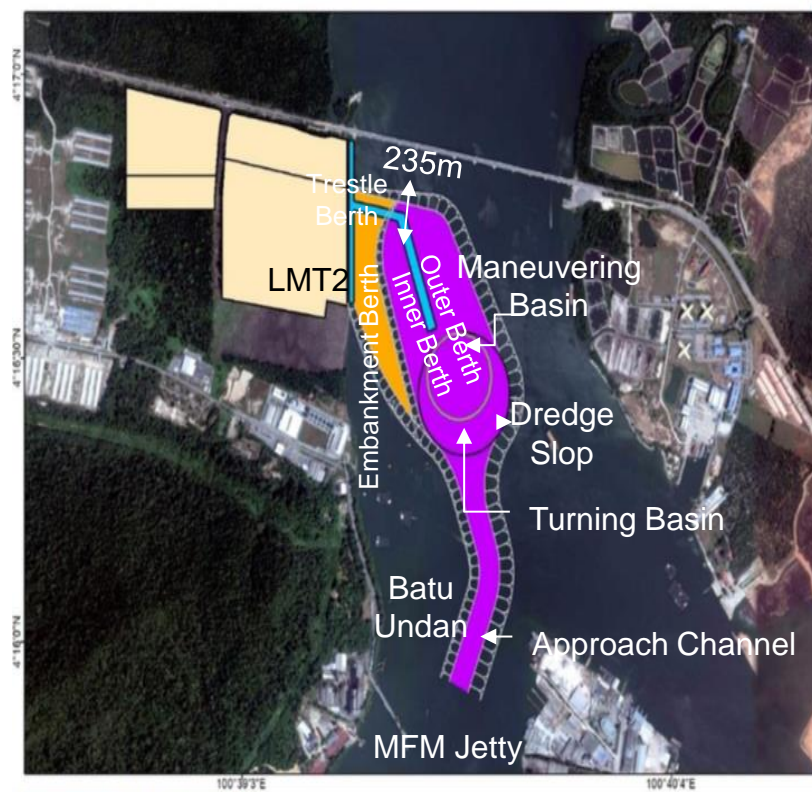
No	Area	Size (acres)
1.	Stockyard	15
2.	Infrastructure	8
3.	Seller to customer/Investor	92



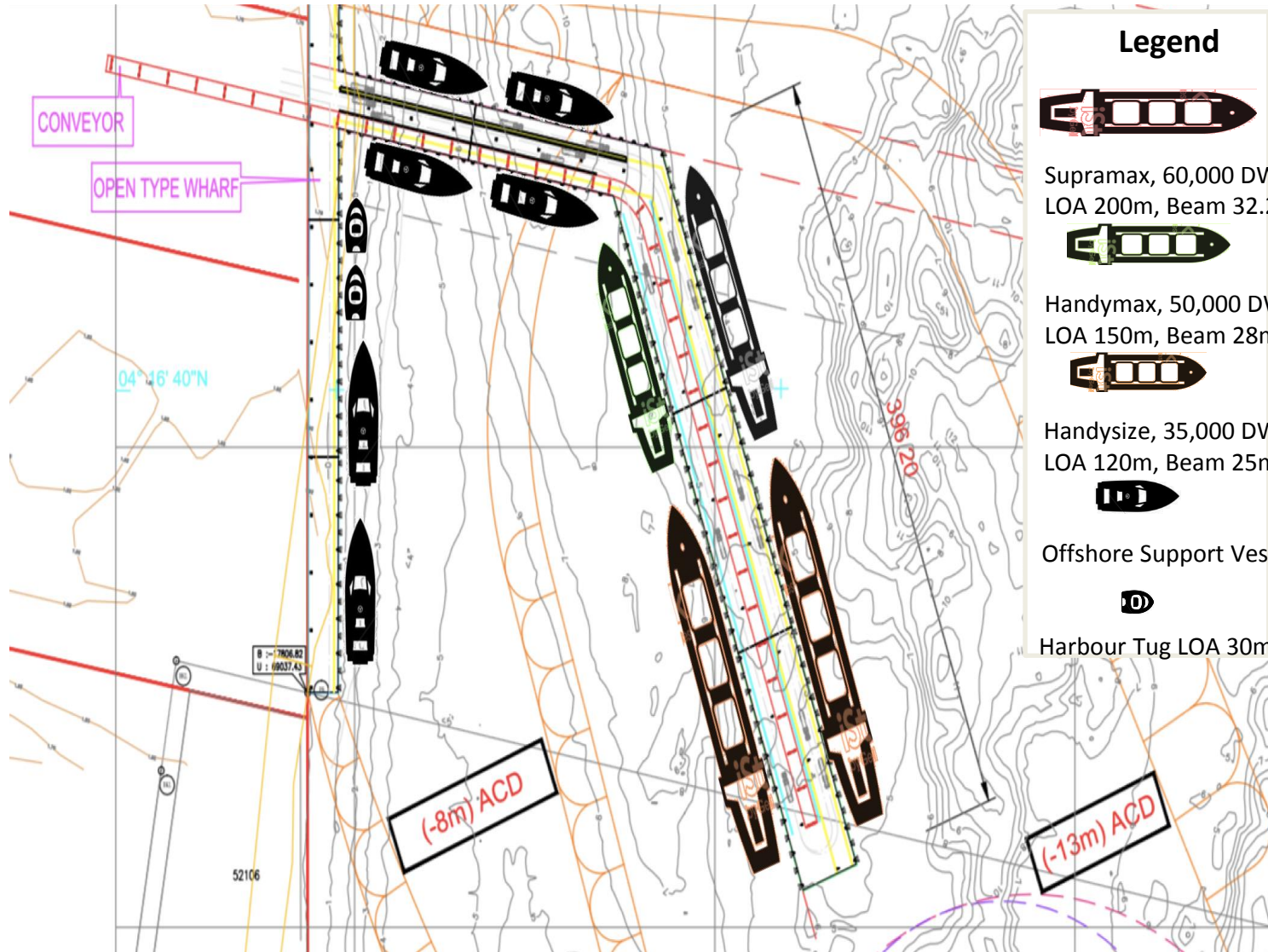
Stockyard Area (15 acres)



LUMUT PORT



- LMT2 consists of a 'L' shape pier with 396.2m length of berth connected by 228m length of trestle.
- A 378.2m embankment berth will be constructed along the retaining wall.
- Manoeuvring basin and the turning basin will be dredged to -13m and wharf front along the embankment will be dredged to -8m.
- Distance from the trestle to Raja Permaisuri Bainun bridge is 235m.



Legend



Supramax, 60,000 DWT
LOA 200m, Beam 32.26m, Draft 13m



Handymax, 50,000 DWT
LOA 150m, Beam 28m, Draft 12m



Handysize, 35,000 DWT
LOA 120m, Beam 25m, Draft 11m



Offshore Support Vessel, LOA 80m

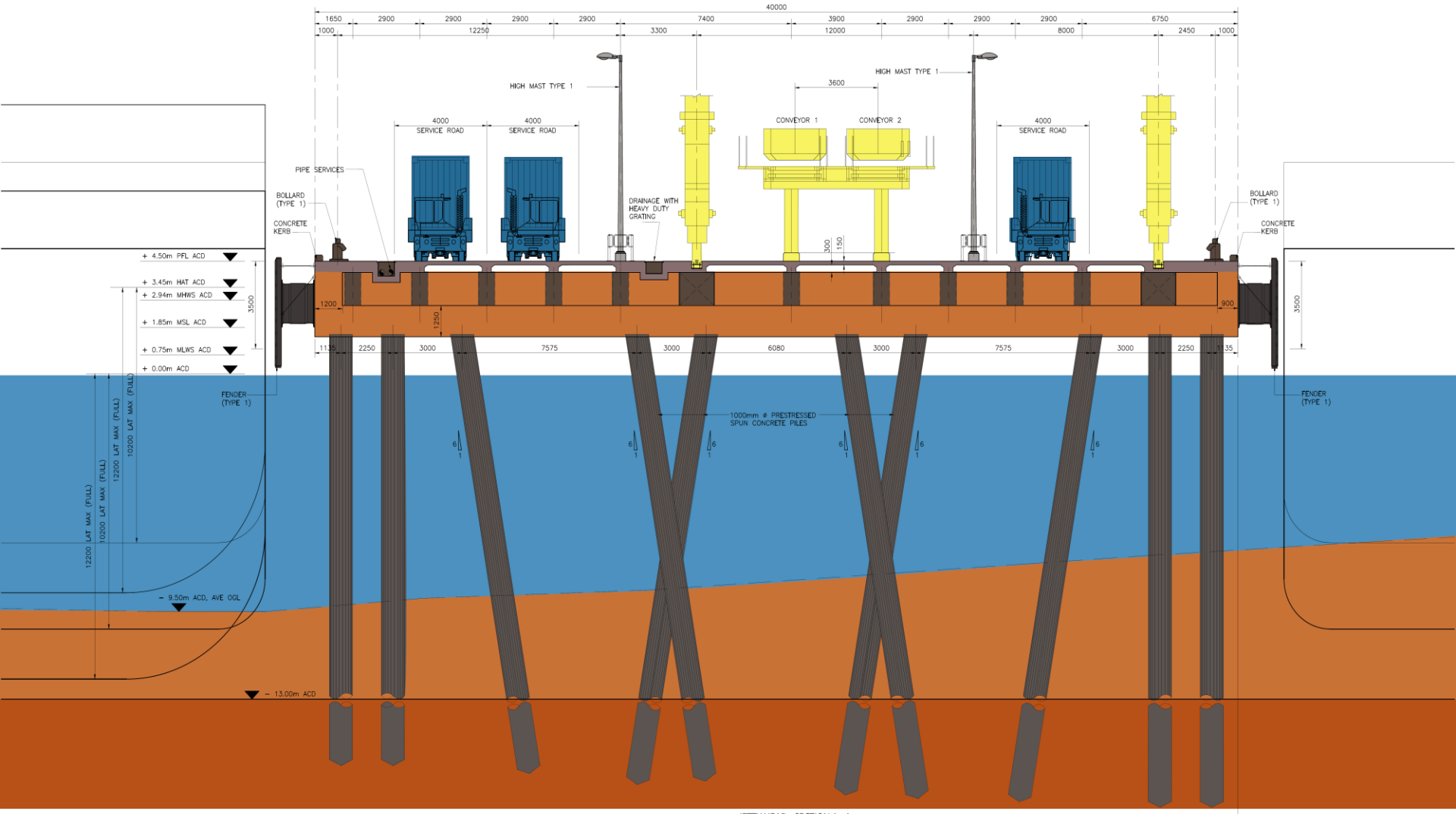


Harbour Tug LOA 30m

LUMUT PORT MARINE RISK ASSESSMENT AND SHIP SIMULATION



THE PROPOSED
DESIGN AND
CONSTRUCTION
OF LUMUT
MARITIME
TERMINAL 2
(LMT2), LUMUT,
PERAK DARUL
RIDZUAN



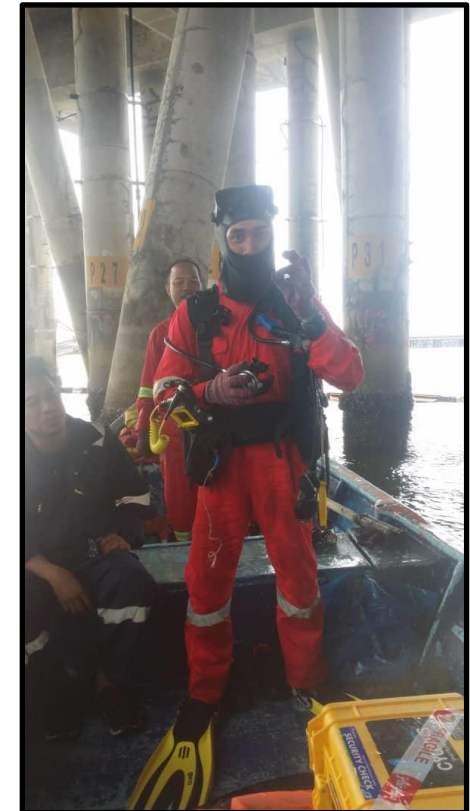
JETTY HEAD - SECTION A - A

ACE/2018-03

PROPOSED TECHNICAL ASSESMENT FOR JETTY 1 (BERTH 1 AND 2) SUBSTRUCTURE AND ITS APPROACH TRESTLE OF BINTULU PORT, SARAWAK

CLIENT : LEMBAGA PELABUHAN BINTULU
PROJECT VALUE : RM1,100,000.00

1. Detailed technical investigation and audit structural components, visual survey and defects mapping to
 - a. Reinforced concrete jetty structure
 - b. Pile section above & below water
 - c. Structural Analysis & Appraisal on the berthing capacity
2. Non-Destructive Testing (NDT) and Destructive Test (DT) measurements including:
 - a. In-situ Sample Core Compression Test (DT)
 - b. Steel Pile thickness Measurement (NDT)
 - c. Chemical Test (e.g. Carbonation Test etc.)
3. Inspection and test systems for the followings :
 - a. Berthing aid system
 - b. Mooring hook c/w integral
 - c. Capstan
 - d. Fender system
 - e. CCTV
 - f. Load monitoring system
 - g. Street lighting
 - h. Earthing system
 - i. Catwalk & ladders







ACE/2019-03

PELANTIKAN JURUPERUNDING BEBAS BAGI PENYELESAIAN PENAMATAN PROJEK PEMBANGUNAN

CLIENT : LEMBAGA PELABUHAN BINTULU
PROJECT VALUE : RM1,800,000.00



Assist Bintulu Port Authority in managing the termination of contract termination including managing meetings with Design & Build Contractors and Project Consultants (PMC) up to the Arbitration process (if any).

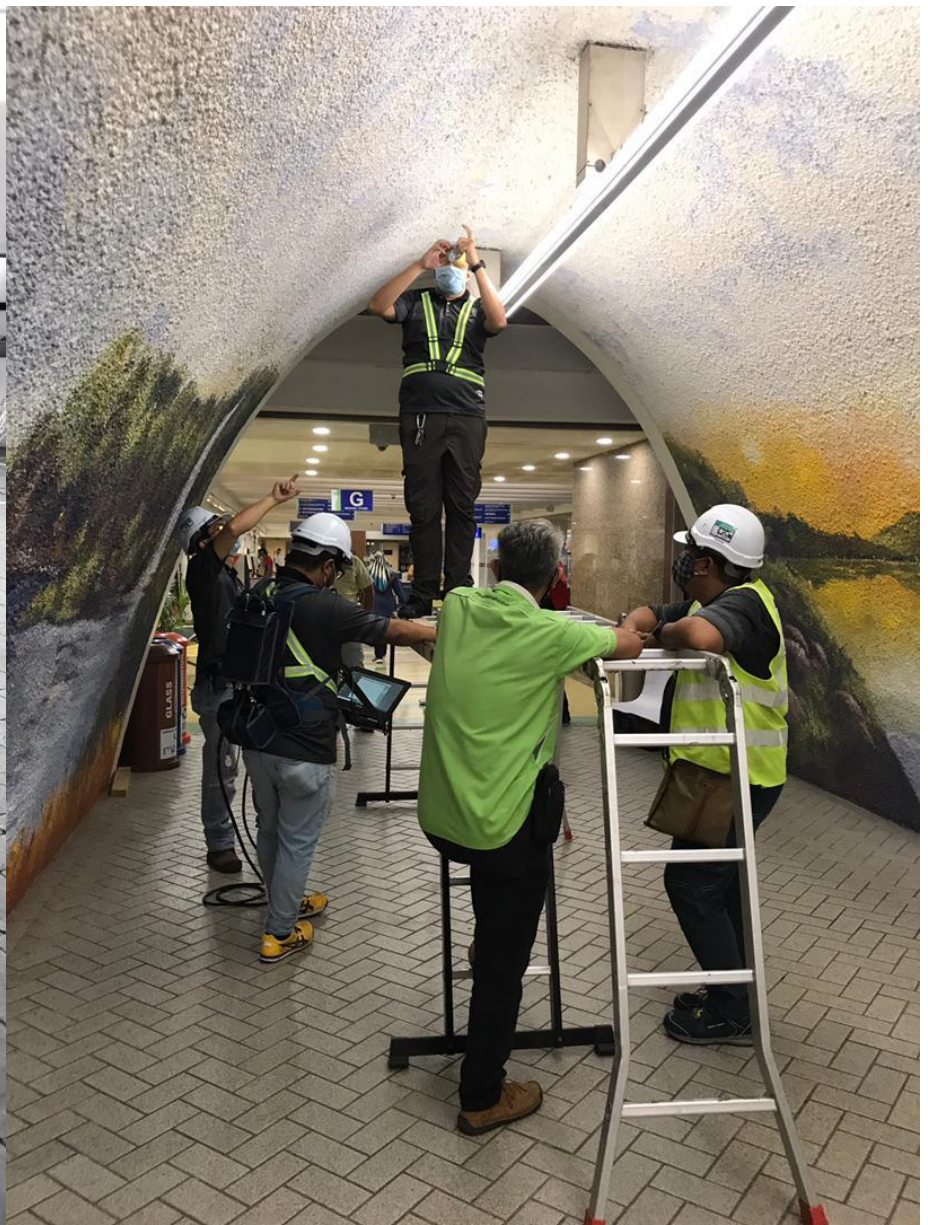


ACE/2020-03

CADANGAN PENILAIAN INTEGRITI STRUKTUR DI MENARA UTAMA, PUSAT PERUBATAN UNIVERSITI MALAYA (PPUM)

CLIENT : PUSAT PERUBATAN UNIVERSITI MALAYA (PPUM)
PROJECT VALUE : RM300,000.00





ACE/2020-04

PROPOSED TECHNICAL ASSESSMENT AND VALUATION OF BINTULU PORT FACILITIES, BINTULU, SARAWAK

CLIENT : LEMBAGA PELABUHAN BINTULU
PROJECT VALUE : RM5,200,000.00

Objective of this works is to audit, evaluate and document the condition of the Bintulu Port Facilities and its associated components in order to provide a reliable technical opinion on its ability to operate and service safely and reliably for another 30 years or more, including recommendations to meet the assessment objective and the valuation of the facilities.



ACE/2022-02

APPOINTMENT OF CONSULTANT ENGINEER SERVICES FOR UNDERWATER INSPECTION OF EXISTING PILES AT SWETTENHAM PIER CRUISE TERMINAL (SPCT), PANGKALAN RAJA TUN UDA (PRTU), PANGKALAN SULTAN ABDUL HALIM (PSAH) AND BUTTERWORTH DEEP WATER WHARVES (BDWW) FOR PENANG PORT SDN BHD

CLIENT : PENANG PORT SDN BHD
PROJECT VALUE : RM1,600,000.00

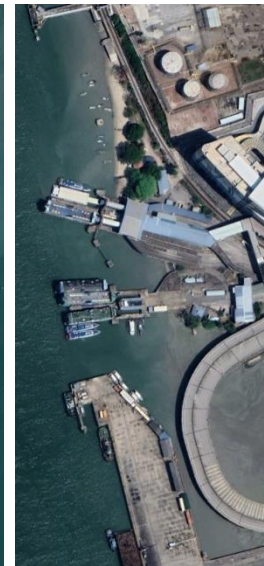
This study is to assess, inspect and evaluate the structural conditions of the above- water & under-water existing piles complete with issuance of the required technical report, estimated cost and planned schedule for all the repair works required on the defective piles detected from the study at Swettenham Pier Cruise Terminal (SPCT), Pangkalan Raja Tun Udara (PRTU), Pangkalan Sultan Abdul Halim (PSAH) and Butterworth Deep Water Wharves (BDWW), Penang Port.



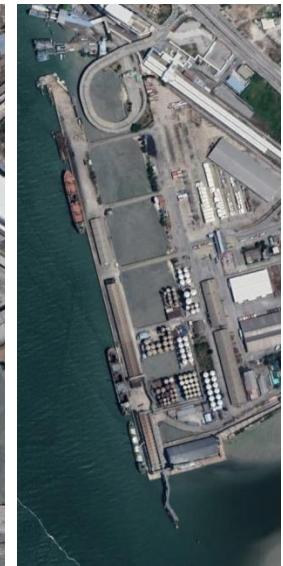
SPCT



PRTU



PSAH

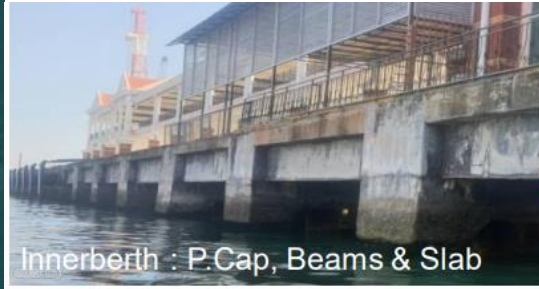


BDWW





SWETTENHAM PIER CRUISE TERMINAL (SPCT),



Innerberth : P.Cap, Beams & Slab



Outerberth : P.Cap, Beams & Slab



Under berth Piles, P.Cap & Beams



Dolphins Piles & P.Caps.





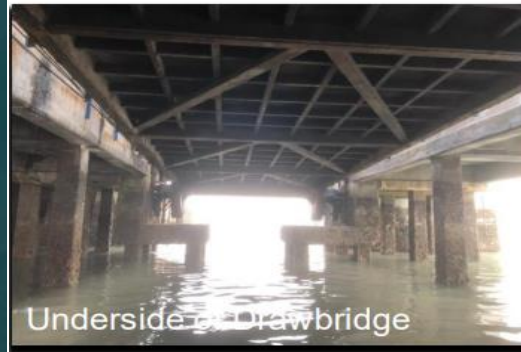
PANGKALAN RAJA TUN UDA (PRTU)



RC Piles, Pier & Precast Beam



RC Piles, Pier & Precast Beam



Underside of Drawbridge

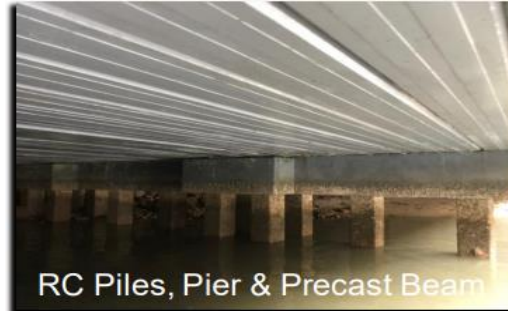


RC Piles, Pier & Precast Beam





PANGKALAN SULTAN ABDUL HALIM (PSAH)



RC Piles, Pier & Precast Beam



Pile Riblock, Pier & Precast Beam

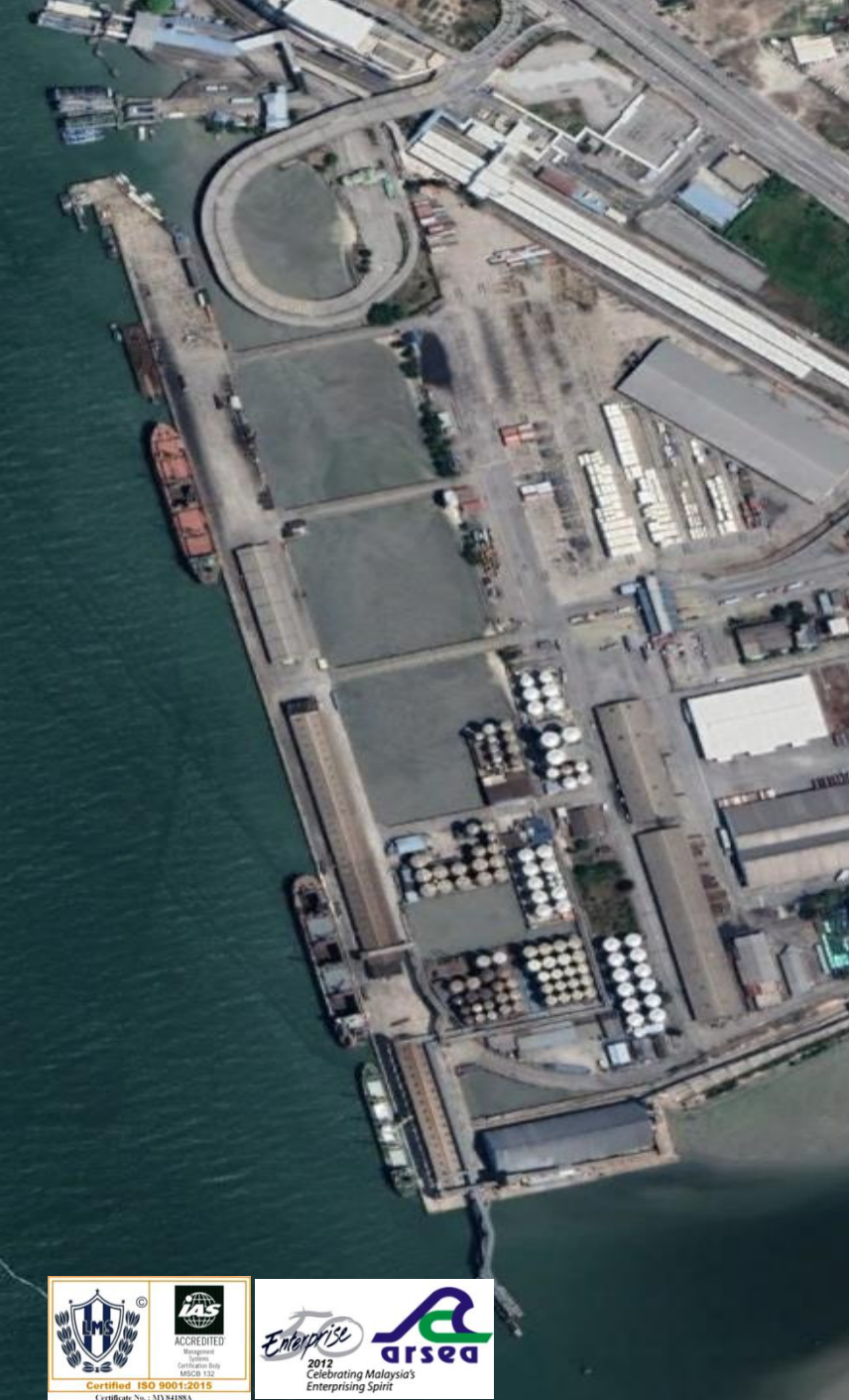


Pile Riblock, Pier & Precast Beam



Pile Riblock, Pier & Slabs





BUTTERWORTH DEEP WATER WHARVES (BDWW)



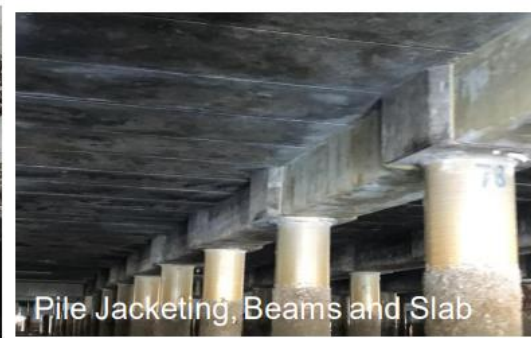
RC Piles, Beam & Slab



Pile caps & Beam



Pile Jacketing & Beams



Pile Jacketing, Beams and Slab

CSR

CORPORATE SOCIAL RESPONSIBILITY



01. Masjid IBN ABBAS, Taman Ibukota, Kuala Lumpur
02. Sekolah KAFA Intergrasi Ar-Rahimah, Taman Greenwood
03. Masjid IBN ABBAS, Taman Ibukota, Kuala Lumpur
04. Sekolah KAFA Intergrasi Ar-Rahimah, Taman Greenwood
05. Majlis Berbuka Puasa bersama Anak-anak Yatim





06

- 06. Majlis Amal & Berbuka Puasa bersama Anak-anak Yatim
- 07. Pejam Charity Golf Challenge 2015

CSR

CORPORATE SOCIAL RESPONSIBILITY



07





THE END



2012
Celebrating Malaysia's
Enterprising Spirit

